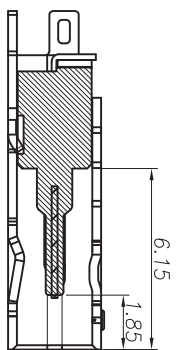
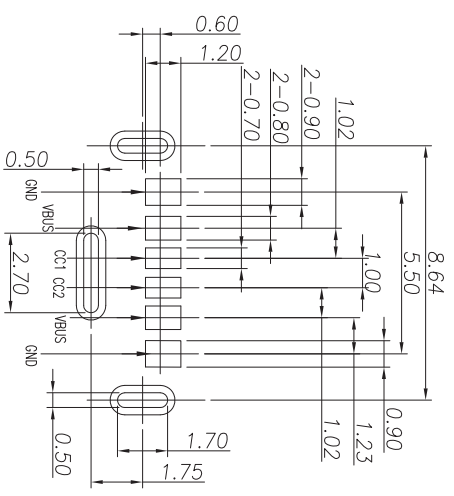
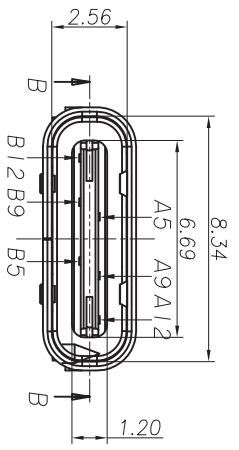
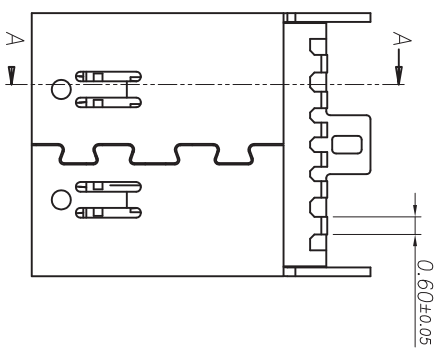
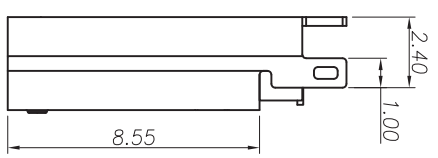
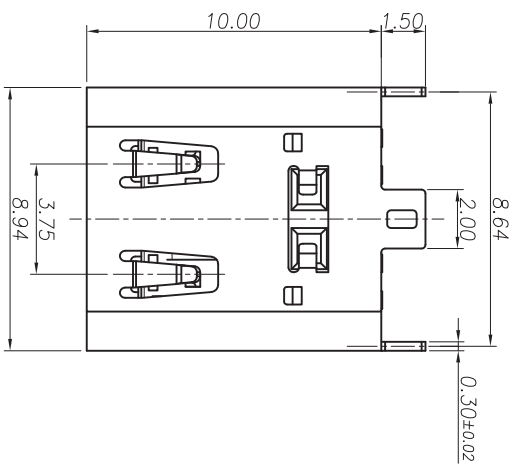
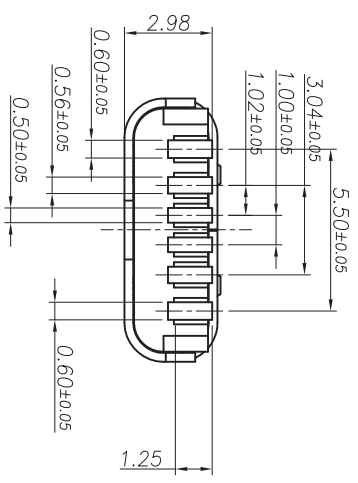


REV.	ECN NO OR DESCRIPTION	REVISED	DATE
A	PROPOSE ONLY	ERIC	

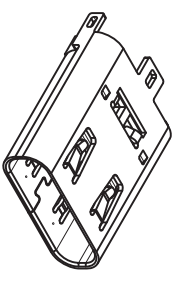


SECTION A-A
Scale:1/1



RECOMMEND PCB LAYOUT
GENERAL TOLERANCE ±0.05

- NOTES:
- MATERIAL:
 - Housing: High Temperature Thermoplastic UL94V-0; Color Black.
 - Terminal: Copper Alloy.
 - Shell: Stainless Steel
 - SPECIALTY:
 - Rated current: 3A
 - Rated voltage: 10V
 - Contact Resistance: 50m OHMS MAX
 - Insulation Resistance: 100M OHMS MIN 100V DC
 - Dielectric withstanding voltage: 100V AC.
 - Solder ability: 235±5 °C 5±0.5s.
 - Durability: 5000 Cycles Min.
 - Operating condition: Temperature -40°C ~ +85°C Humidity 80% R.H MAX
 - PLEASE CONTACT KRCONN SALES REPRESENTATIVE TO VERIFY PRODUCT DETAILS & AVAILABILITY



NO.	DESCRIPTION	QTY	MATERIAL	NOTE
3	TERMINAL	6	COPPER ALLOY	CONTACT Au OVER ALL.
2	SHELL	1	STAINLESS STEEL	END ALL OVER ALL.
1	HOUSING	1	THERMOPLASTIC	UL 94V-0

深圳市顺安康科技有限公司

TITLE 6pin TYPE.C CONN. SHK-31018

DECIMALS:	ANGLES:	DWN	CHKD	APVD
:±0.5	X :±2°	Johnie	Kevin.d	Simon.Mo
X.X :±0.20	X.X :±1°	SCALE:1:1	SIZE: A4	SHEET:10F1
X.XX :±0.10				REV. B

CUSTOMER COPY