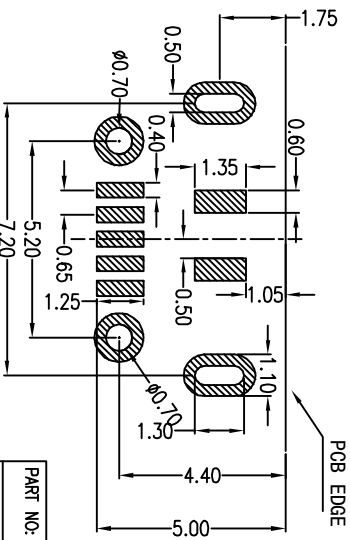
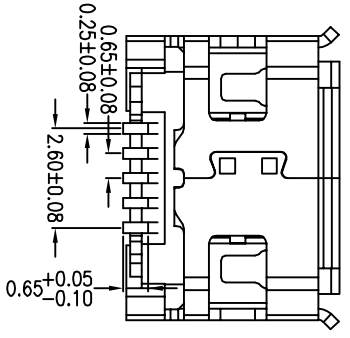
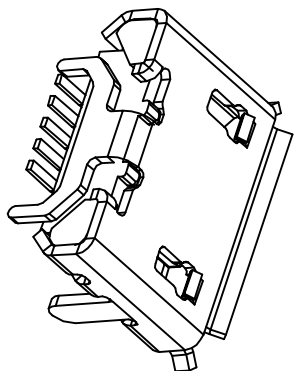
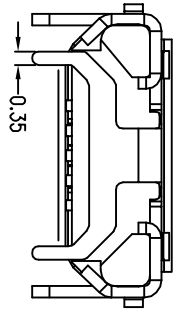
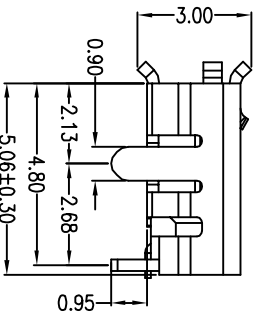
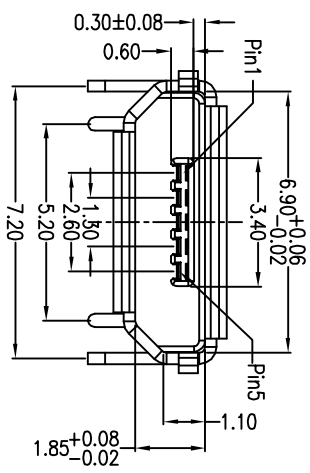
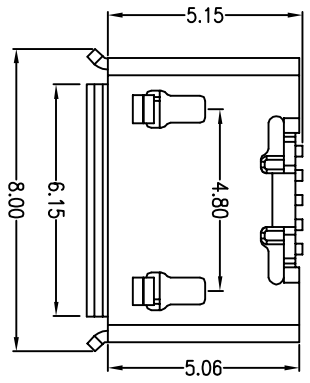


| REV. | ECH NO | LOCATIONS | DESCRIPTION | DATE |
|------|--------|-----------|-------------|------|
| | | | | |



A 01 S B X X X X X X X X X X X X
 ① ② ③ ④ ⑤ ⑥ ⑦ ⑧ ⑨ ⑩ ⑪

外壳材质
1: COBBOH+H
外壳电镀
1: Ni100u''
2: 雾100u''
3: Au10u'' (脚)
4: Au1u''

端子电镀
01: Au1u'' ; 02: Au1.5u'' ; 03: Au6u''
05: Au6u'' ; 10: Au10u'' ; 15: Au15u'' ; 30: Au30u''
主体颜色 B: 黑色
主体材质 1: LCP
端子材质 4: QS191R-CH

PCB图仅供参考

| | | | | | |
|-----------------------|------------------|-------|-----------|----------|------------|
| PART NO: | A01SBXXXXXXX-309 | | MATERIAL: | SEE NOTE | |
| MODEL NO: | XX | | FINISH: | SEE NOTE | |
| UNIT: | MM | SIZE: | A4 | DR: | xiaoyulong |
| TOLERANCE UNSPECIFIED | | | CHK: | APP: | |
| .x | | 0.15 | | | |
| .xx | | 0.10 | | | |
| .xxx | | 0.05 | | | |
| Ang. | | ↑ | | | |

深圳市顺宏康科技有限公司

TITLE: MINDO USB SB B TYPE 四脚全插牛角型1.2/5.2间距针

DWG NO: SHK-20037

SCALE: 5:1

DATE: 2012.05.02

REV: A

- Note:
1. Material:
 - 1.1 Housing: High temperature thermoplastic with g.f.U.L94V-0
 - 1.2 Contact: copper alloy,t=0.15mm
 - 1.3 Shell: copper alloy,t=0.30mm
 2. Specification:
 - 2.1 Current rating:1.5PIN 1.8A Max/2,3,4PIN 1A Max
 - 2.2 Dielectric withstanding voltage: 100 V(ac) for 1 min.
 - 2.3 Contact resistance: 30 mΩ Max.
 - 2.4 Insulation resistance: 100 MΩ Min.
 - 2.5 Total mating force: 3.57 Kgf Max.
 - 2.6 Total unmating force: 1.0 Kgf Min.
 - 2.7 Temperature range:-30℃~90℃