

PCB LAYOUT

Specification

- *Electrical Characteristics:
- Contact Current Rating:0.5 Amperes.
- Dielectric Withstanding Voltage:AC 100V R.M.S
- Insulation Resistance:100M Ω Min.
- Contact Resistance:50M Ω Max.

*Environmental:

- Operating Temperature: -40° C ~ +85° C
- *Mechanical Characteristics:
- Matching Cycles:1500 Cycles
- Contact Insretion Force:3.57Kgf Max
- Contact Separation Force:0.1Kgf Min

*Mechanical Characteristics:

- Housing:Hi-Temp UL 94V-0 Rated
- Contact:Phosphor Bronze (t=0.15mm)
- Shell:Copper Alloy(t=0.3mm)

材料:Material:

塑胶:Housing:Hiing Temperature Thermoplastics,

UL 94V-0 耐高温塑胶

端子:Contact:Copper Alloy 铜合金

铜壳:Shell: 铜合金

电镀:Finish:

端子:Contact: Plated Gold in Mating Area;

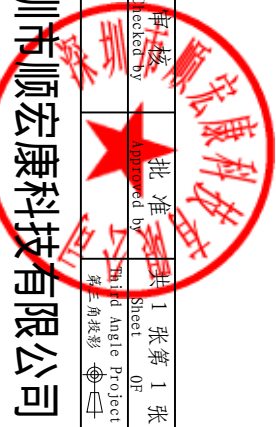
Tin On Solder Talls

铜壳:Shell:

Nickel/ Plating

▲ 变更内容 Modify content	签名 Sign by	审核 Checked by	日期 Date	AMES 2P SURFACE TEXTURE 2P	客户 Customer	品名 Item	材质 Material	厚度 MAT. THICK	数量 Amount	表面处理 Surface	交期 Unit	图号 Drawing NO.	设计 Designed by	图号 Drawing NO.	数量 Amount	表面处理 Surface	交期 Unit	比例 Scale	比例 Scale

(unless otherwise specified, tolerances are 未注尺寸公差)



深圳市顺安康科技有限公司