

项目 Maxd	变更内容 Modification	日期 Date	修改人 Draw	核准 Approve

规格说明: Specifications:
电气特性: Electrical:

- 额定电流: Current Rating
3.1A/contact terminal
- 额定电压: Voltage Rating
30V DC
- 接触阻抗: Contact Resistance
30 milliohms MAX
- 耐电压: Dielectric Withstanding Voltage:
500 V AC AT Sea Level
- 绝缘阻抗: Insulation Resistance:
1000MEGA ohms MIN

物理性能: Mechanical:

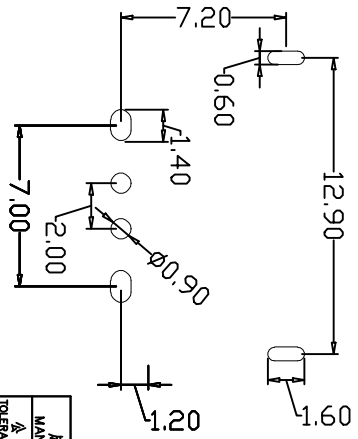
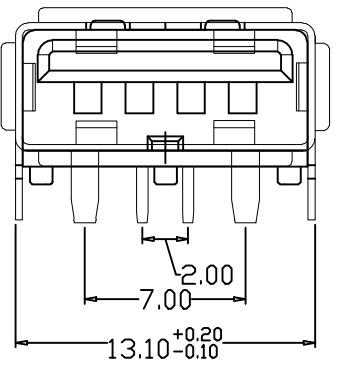
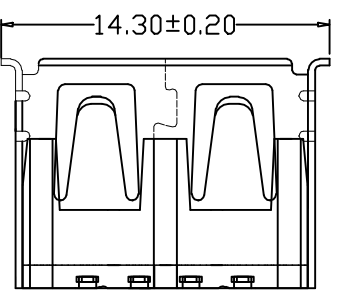
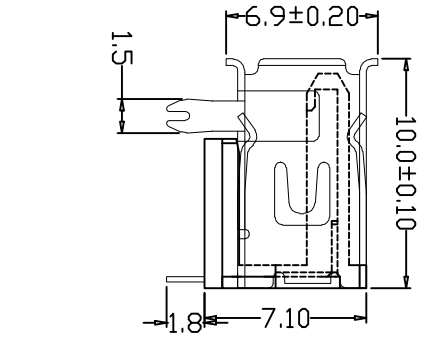
- 插拔力: Connector Mate and Unmate Force
Mate force: 3.57kgf(MAX)
Unmate force: 1.02kgf(MIN)
- 端子保持力: Terminal Retention
1.0kgf(MIN)

原材料: Material:

- 塑壳: Housing:
Hing Temperature Thermoplastics,

电镀: Finish:

- 端子: Contact: Plated Gold in Mating Area;
Tin On Solder Talls
- 外壳: Shell:
端子四周镀50U“(MIN)镍,镀金区域镀100-200U”镀金1U”
- 外壳: Shell:
铜壳四周镀80U“(MIN)镍
Nickel Plating



公差 TOLERANCE UNLESS OTHERWISE SPECIFIED	图例 DIMS	日期 DATE	比例 SCALE	图名 DRAWING	图号 DWG NO.
X±0.20	X±5°	2017.06.20	1:1	DRIVING	SHK-30114
XX±0.10	.X±2°			DESIGN	四脚连接器
XXX±0.05	.XX±1°			VIEW	第 1 页 SHEET 001

深圳市顺宏康科技有限公司