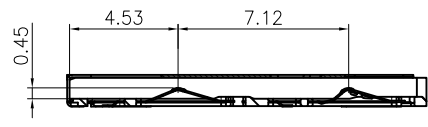
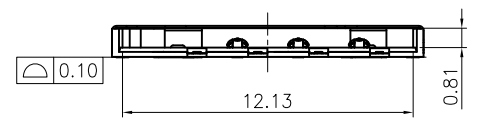
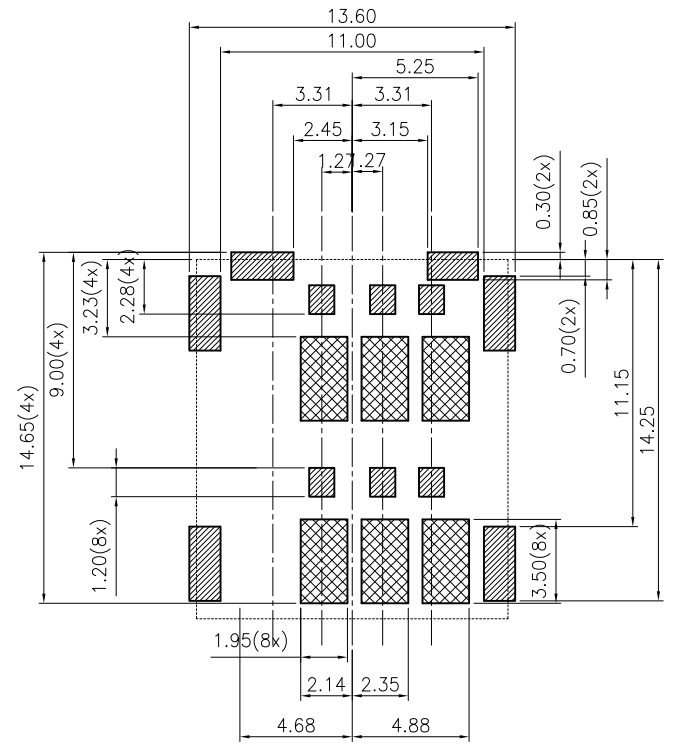
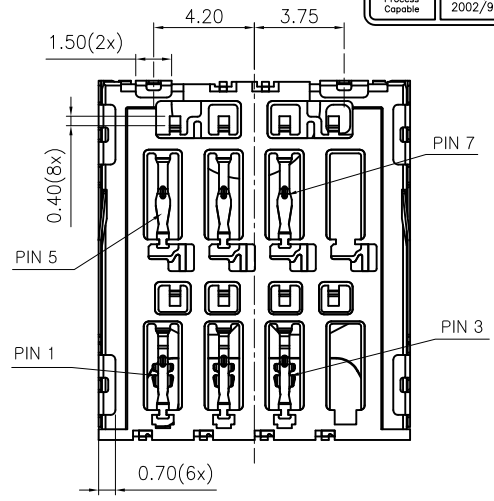
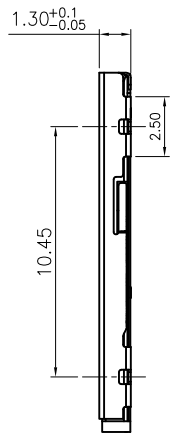
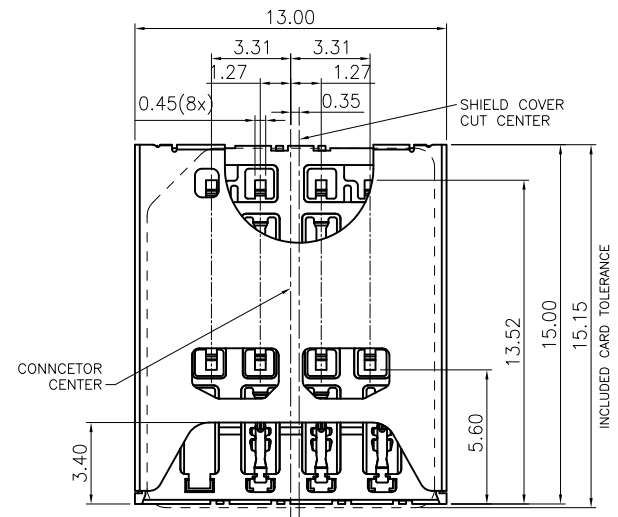




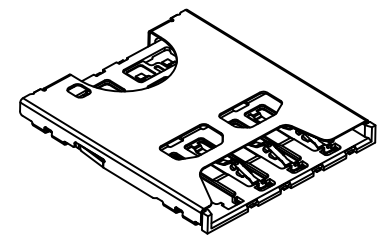
REV.	ECN NO OR DESCRIPTION	REVISED	DATE
▽	PROPOSE ONLY	ALLEN	2014.02.04



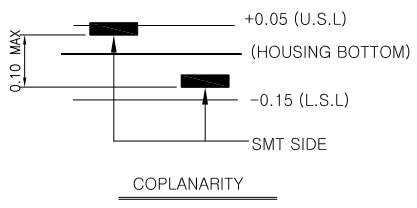
Specification  
 \*Electrical Characteristics:  
 Contact Current Rating:0.5 Amperes.  
 Dielectric Withstanding Voltage:AC50 0V r.m.s.  
 Insulation Resistance:500 MΩ Minimum.  
 Contact Resistance: 30mΩ Maximum.  
 \*Environmental:  
 Operating Temperature:- 30 °C~+ 85 °C.

NO PATTERN AREA  
 ALL SOCKET SPACES(HATCHING AREA)  
 WITHOUT SOLDER PATTERN

P.C.B LAYOUT (Top View)  
 (General Tolerance ±0.05)



3D View



PART No.:  
**MS 0 DD - 13 00 06- 03 T**  
 MICRO SIM CON. T=防浪端子  
 0=WITHOUT POST 03=Product Order  
 DD=WITH UPLOCK Pin NO. 6=6Pin  
 15=HEIGHT 1.5mm 00=NORMAL TYPE.(ON PCB)

PIN No.	DESCRIPTION
PIN 1	VCC (SUPPLY VOLTAGE)
PIN 2	RST (RESET SIGNAL)
PIN 3	CLK (CLOCK SIGNAL)
PIN 4	RESERVED
PIN 5	GND
PIN 6	VPP (VARIABLE SUPPLY VLOTAGE)
PIN 7	I/O (DATA INPUT/OUTPUT)
PIN 8	RESERVED

NO.	PART NAME	Q'TY	DESCRIPTION	NOTE
③	TERMINAL	6	CS210-EH,T=0.12	Au 5u" PLATING
②	BASE INSULATOR	1	CP+GF30%	BLACK
①	SHELL	1	SUS304-H,T=0.12	AU/Ni PLATING

UNLESS OTHERWISE SPECIFIED TOLERANCES

**深圳市顺宏康科技有限公司**

DECIMALS:	ANGLES:	TITLE	6Pin 1.3H PUSH PULL Micro SIM CARD CONN.			
X :±0.5	X :±2°	DWN	ALLEN	PART NO.	<b>SHK-10368</b>	
X.X :±0.20	X.X :±1°	CHKD	KEVIN	SCALE:1:1	UNIT: mm	
X.XX :±0.10		APVD	ERIC.W	SIZE: A3	SHEET:1OF 1	REV: A1
CUSTOMER COPY						