

REV.	ECN NO OR DESCRIPTION	REVISED	DATE
▽	PROPOSE ONLY	ALLEN	2016.2.08

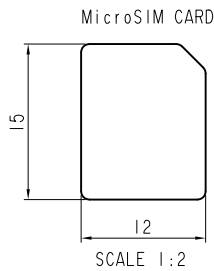
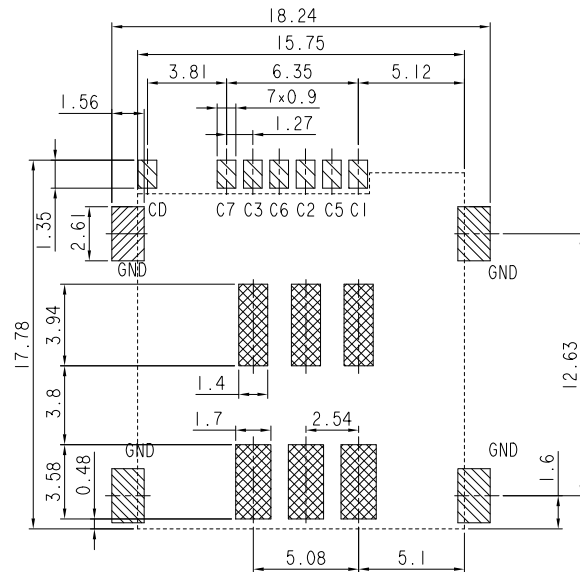
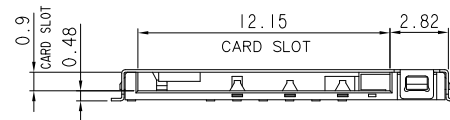
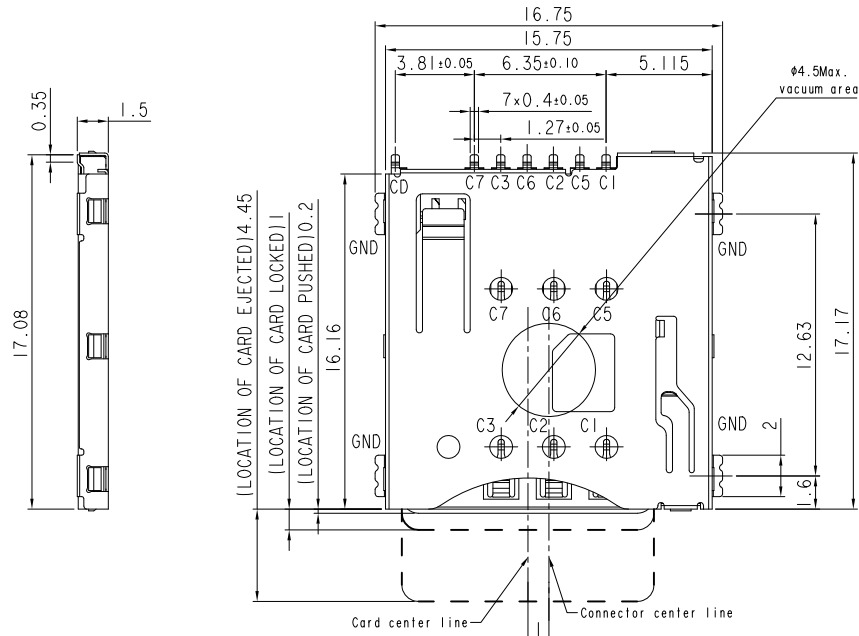
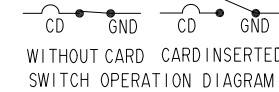
TECHNICAL CHARACTERISTICS

- General Characteristics
Dimensions: 15.75LX17.17WX1.50H mm
Weight: Approx 0.4±0.1g
Durability: 1500 cycles min.
- Electrical Characteristics
Contact resistance:
Date Contact: 150mΩ max
CD Switch: 500mΩ max
Insulation resistance: >1000MΩ/500V DC
- Solderability
Vapor phase: 215°C, 30sec. Max
IR reflow: 250°C, 5sec. Max
Manual soldering: 370°C, 3sec. Max
- Environmental Characteristics
Operating temperature: -40°C~+85°C
Operating humidity: 10%~95%RH
- PART No.:

S 0 PP - 15 00 06 - 17 G

SIM CON. G
0=WITHOUT POST G=gold plating
PP=PPUSH Type. 17=Product Order
15:HEIGHT 1.5mm 00=NORMAL TYPE.(ON PCB)
Pin NO. 6=6Pin

ELECTRIC FUNCTION	DETECT SWITCH
WITHOUT CARD	CLOSED
CARD INSERTED	OPEN



MicroSIM CARD	
Pin No.	NAME
C1	VCC
C2	RST
C3	CLK
C4	Reserved
C5	GND
C6	VPP
C7	I/O
C8	Reserved



ITEM	PART NAME	Q'TY	MATERIAL	FINISH
1	HOUSING	1	Hi-temp Thermoplastic	Black UL94V-0
2	DATA CONTACT	6	Copper Alloy	Contact area:Gold plated
3	CD SWITCH	1	Copper Alloy	Contact area:Gold plated
4	SHELL	1	Stainless Steel	SMT area:Gold plated
5	COIL SPRING	1	SWP	
6	HEART CAM	1	Hi-temp Thermoplastic	Black UL94V-0
7	CAM PIN	1	Stainless Steel	

UNLESS OTHERWISE SPECIFIED TOLERANCES

DECIMALS: X :±0.5 X.X :±0.20 X.XX :±0.10

ANGLES: X :±2° X.X :±1°

深圳市顺宏康科技有限公司

TITLE: 1.5mm Push Push Micro SD CARD CONN.

DWN ALLEN PART NO. SHK-10369

CHKD KEVIN SCALE: 1:1 UNIT: mm

APVD ERIC.W SIZE: A3 SHEET: 1 OF 2 REV: A2

CUSTOMER COPY