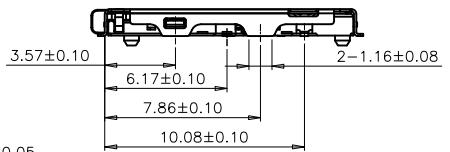
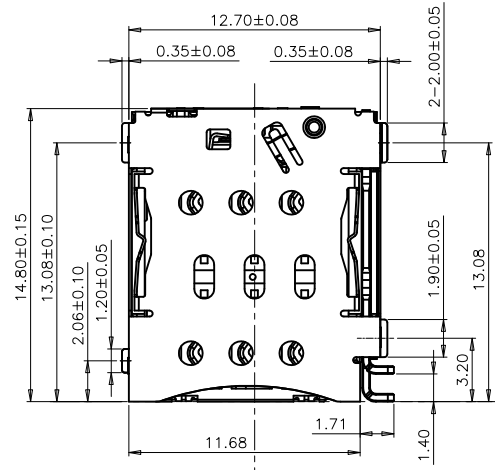
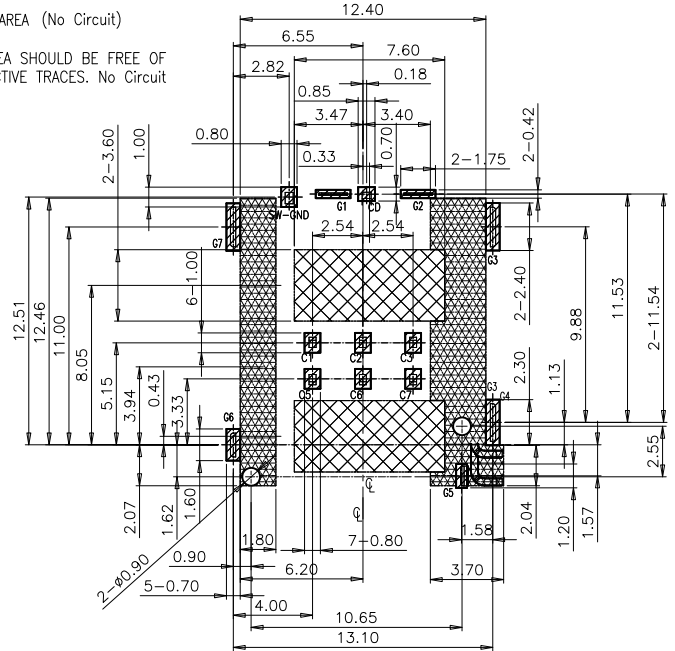
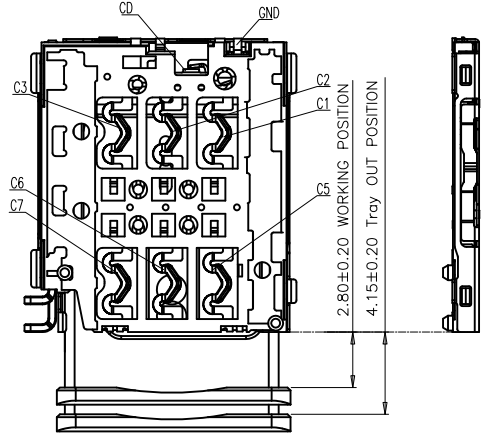




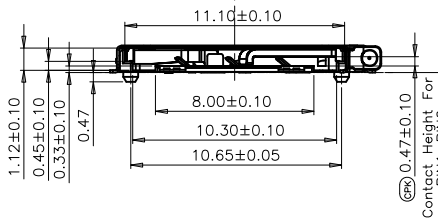
REV.	ECN NO OR DESCRIPTION	REVISED	DATE
1	PROPOSE ONLY	ALLEN	2015.06.04



SMT SOLDER AREA.
 KEEP OUT AREA (No Circuit)
 THESE AREA SHOULD BE FREE OF ANY CONDUCTIVE TRACES. No Circuit



Center for connector
Center for Tray



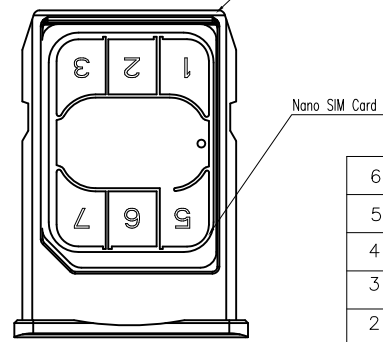
0.08 BEFORE IR
 0.10 AFTER IR
 ALL SMT SOLDER TAIL

CONNECTOR	PART NO.	PLATING
PIN PUSH Nano SIM CONNECTOR(7pin) 1.35mm HEIGHT	NS1PL-130006-25G	Shell Solder: G/F; 30u"NI PLATING CONTACT: 10u"Au; solder: 1u"Au; 60u"NI PLATING HOUSING(No add any recycling material)

RECOMMENDED PCB LAYOUT (TOLERANCE: ±0.05) NO PATTERN AREA (TOLERANCE: ±0.05)

Nano SIM Circuit Description:

PIN No.	FUNCTION
C1	VCC
C2	RST
C3	CLK
C4	RESERVED
C5	GND
C6	VPP
C7	I/O
C8	RESERVED

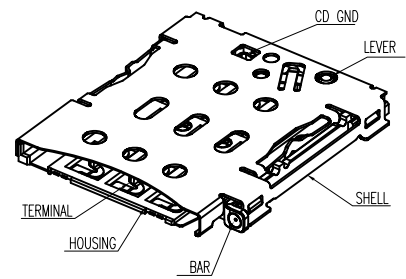


SW Circuit Description for Connector:

CARD INSERTION STATE	DETECT SWITCH CIRCUIT STATE	SCHEMATIC
TRAY MATED	OPENED	DETECT PIN [CD] - [GND]
TRAY UNMATED	CLOSED	DETECT PIN [CD] - [GND]

NO.	PART NAME	PART NO.	QUANTITY	COLOR/MATEIAL
6	CD GND		1PCS	C5240
5	BAR		1PCS	SUS304-H
4	LEVER		1PCS	SUS304-H
3	SHELL		1PCS	SUS304-3/4H
2	TERMINAL		1SET	C5240
1	HOUSING		1PCS	LCP BLACK

- NOTES:
- MATERIAL: SEE TABLE(Housing can't add any recycled material)
 - SPECIALITY:
 - Rated current:1.0A
 - Rated voltage:30V
 - Contact Resistance:50mohm MAX
 - Insulation Resistance:1000Mohm MIN 500V DC
 - Dielectric withstanding voltage: 500V DC.
 - Solder ability:250? °C, 10±0.5s.
 - Durability:3000 Cycles
 - Mating and Unmating force
Insertion Force 10N Max; Withdrawal Fore 2N Min
 - Operating condition:
Temperature-40°C~+85°C; Humidity 80% R.H MAX
 - D/C AREA DESCRIBE: JXXXXXX
 YEARS:2017=7 Line:A/B/C... line
 WEEK:01...56 DAY/night shift:
 DAY:1=MON.2=TUN... A=Day shift
 B=Night shift
 - COPLANARITY: BEFORE IR 0.08mm Max
AFTER IR 0.08 mm Max
 - PLEASE CONTACT KRCONN SALES REPRESENTATIVE TO VERIFY PRODUCT DETAILS & AVAILABILITY



UNLESS OTHERWISE SPECIFIED TOLERANCES
 DECIMALS: ANGLES:
 X :±0.5 X :±2°
 X.X :±0.20 X.X :±1°
 X.XX :±0.10

深圳市顺宏康科技有限公司

TITLE: NANO SIM Card 6pin 1.35H CONN. WITH LEVER (WITH DITECT NORMAL OPEN)

DWN ALLEN PART NO. SHK-10371

CHKD KEVIN SCALE:1:1 UNIT: mm

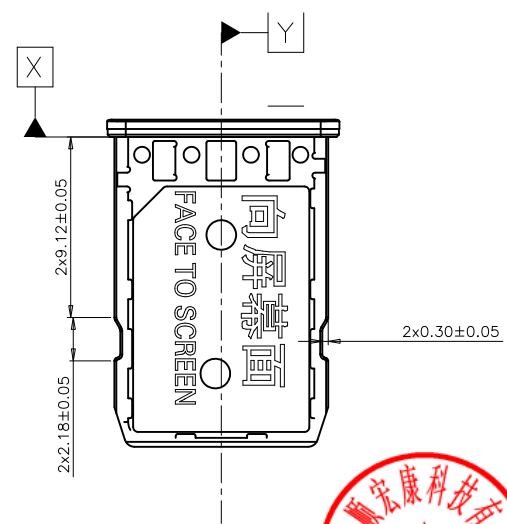
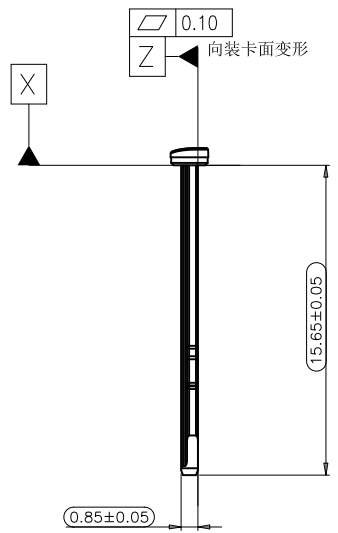
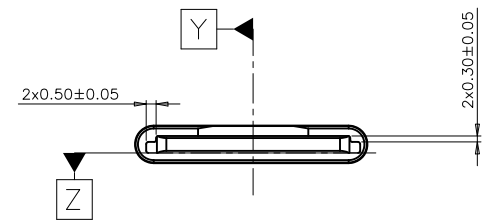
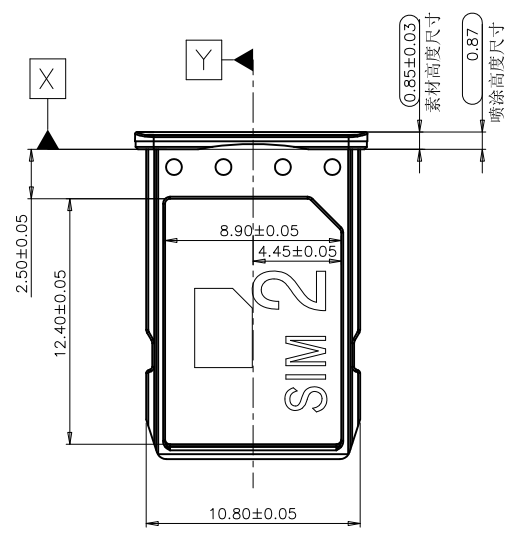
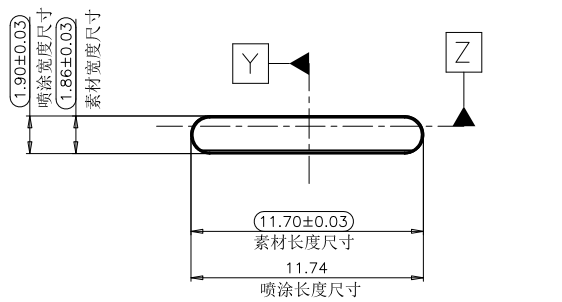
APVD ERIC.W SIZE: A3 SHEET:10F 1 REV: A2

CUSTOMER COPY



REV.	ECN NO OR DESCRIPTION	REVISED	DATE
▽	PROPOSE ONLY	ALLEN	2015.06.04

- 技术要求:
- 1.材质:塑胶请参考CMF, 钢片SUS304 3/4H
 - 2.零件表面细节和未注尺寸请按照三维CAD文件制做;
 - 3.本产品未标示之圆角为R0.1,拔模角度小于1度,保证底部尺寸,即减胶拔模;
 - 4.本产品与对应之配合壳体间隙不能超过0.1mm;
 - 5.SLIDE区与周围表面断差不大于0.02mm;
 - 6.平面度小于等于0.10;
 - 7.零件不得有锐边,零件外观必须光滑,不得有毛刺,刮伤,披峰或其他缺陷;
 - 8.标记(材料,模穴数,日期,版本号)的位置和形式必须经过WINGTECH的机械工程师确认, 标记印痕不得超出零件表面,并且深度不得超过0.1mm;
 - 9.外观面请见ID相关工艺文件;
 - 10.制品外观质量应符合闻泰公司手机外观检验标准要求;
 - 11.带方框的尺寸是重要尺寸,是QC重点检验尺寸; 未标示尺寸,依照公差标准执行;
 - 12.标带*符号的尺寸需要做CPK;
 - 13.产品材料必须满足ROHS标准;
 - 14.导电器件任意两点间的电阻小于1欧姆;
 - 15.出货需增加厂商的标示符及卡托厂的标示符简写,便于后续追溯;

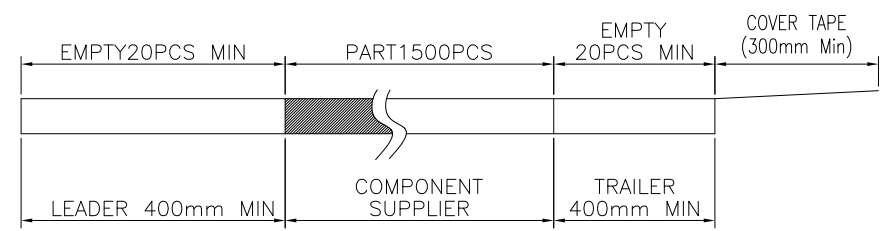
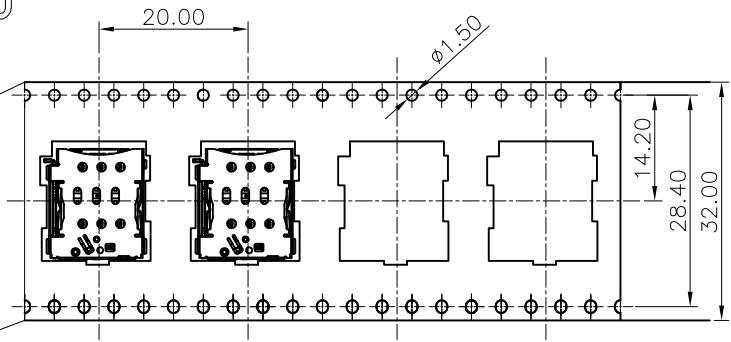


UNLESS OTHERWISE SPECIFIED TOLERANCES		深圳市顺宏康科技有限公司			
DECIMALS:	ANGLES:	TITLE	NANO SIM Card 6pin 1.35H CONN. TRAY WITH LEVER (WITH DTECT NORMAL OPEN)		
X :±0.5	X :±2'	DWN	ALLEN	PART NO.	SHK-10371
X.X :±0.20	X.X :±1'	CHKD	KEVIN	SCALE:1:1	UNIT: mm
X.XX :±0.10		APVD	ERIC.W	SIZE: A3	SHEET:10F 1
		CUSTOMER COPY			





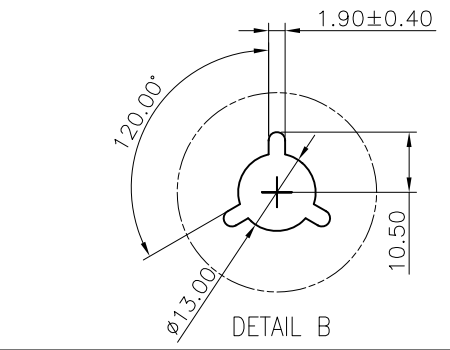
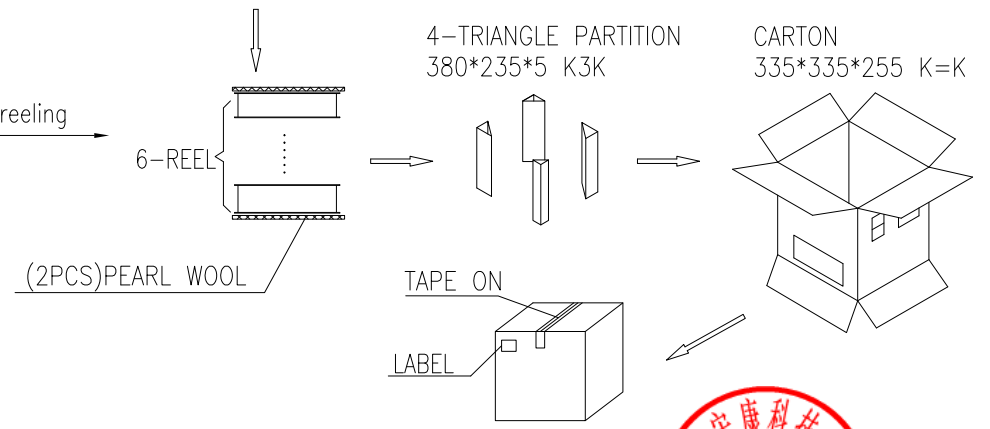
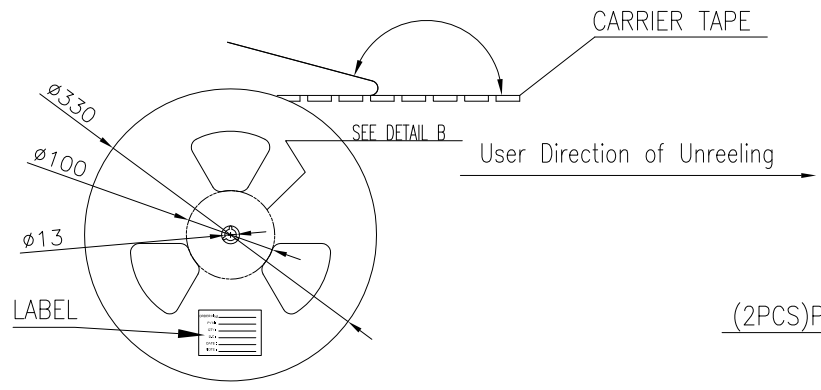
REV.	ECN NO OR DESCRIPTION	REVISED	DATE
1	PROPOSE ONLY	ALLEN	2016.08.10



COVER TAPE PEELING ANGLE: 165°~180°
PEELING FORCE: 20~130g

NOTES

- NUMBER OF CONNECTORS: 1500PCS/REEL
- LEAD TAPE LENGTH
- QUANTITY: 9000PCS/CARTON
- WEIGHT :
 - 4.1 NET WEIGHT : 4.50Kg/CARTON
 - 4.2 GROSS WEIGHT : 8.50Kg/CARTON



UNLESS OTHERWISE SPECIFIED TOLERANCES		深圳市顺宏康科技有限公司			
DECIMALS:	ANGLES:	TITLE	NANO SIM Card 6pin 1.35H CONN. 包装规范		
X : ±0.5	X : ±2°	DWN	ALLEN	PART NO. SHK-10371	
X.X : ±0.20	X.X : ±1°	CHKD	KEVIN	SCALE: 1:1	UNIT: mm
X.XX : ±0.10		APVD	ERIC.W	SIZE: A3	SHEET: 1 OF 1
		REVISION: REV: A			
CUSTOMER COPY					