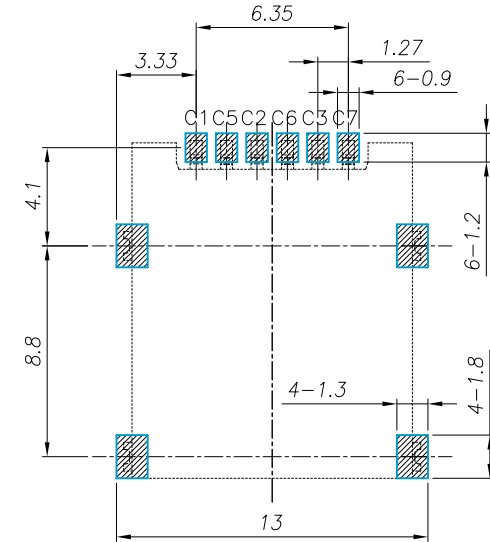
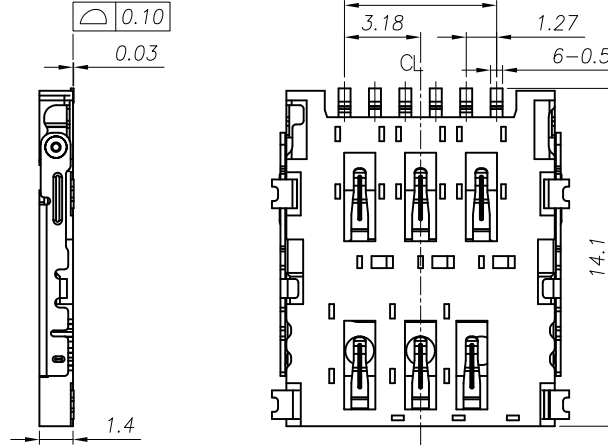
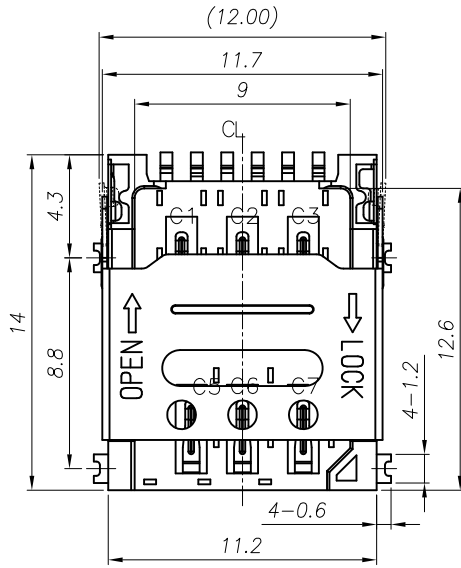
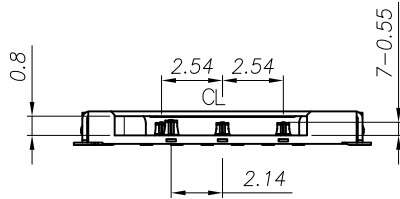


REV.	ECN NO OR DESCRIPTION	REVISED	DATE
▽	PROPOSE ONLY	ALLEN	2016.04.04

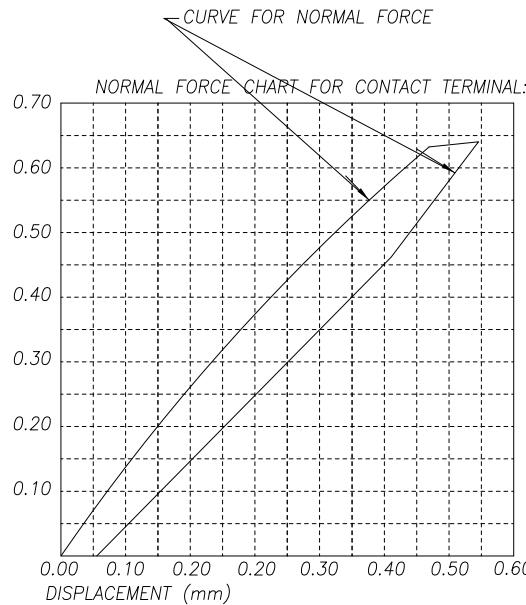
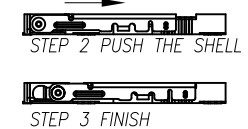
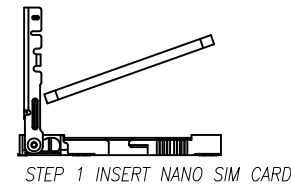
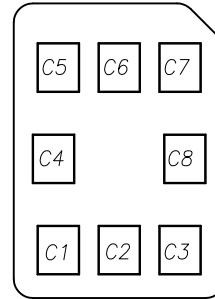


RECOMMENDED PCB LAYOUT TOP VIEW (TOLERANCE:±0.05)  
RECOMMENDED METAL MASK T=0.12MM



【 SIM Card Pin Assignments 】

PIN	Name
C1	Vcc
C2	RST
C3	CLK
C4	Reserved
C5	GND
C6	Vpp
C7	I/O
C8	Reserved



- NOTES:
- MATERIAL:
    - Housing: High Temperature Thermoplastic UL94V-0; Color Black.
    - Terminal: Copper Alloy, T=0.12mm.
    - Shell: Stainless Steel, T=0.20mm.
  - FINISH:
    - Terminal: Plated Gold on the Contact Area and Solder Tails
    - Peg: Plated Gold on the Solder Tails.
  - SPECIALITY:
    - Rated current: 0.5A
    - Rated voltage: 50V
    - Contact Resistance: 80mΩ MAX
    - Insulation Resistance: 100MΩ MIN 100V DC
    - Dielectric withstanding voltage: 100V AC.
    - Solder ability: 245±5°C, 5±0.5s.
    - Operating condition: Temperature: -30°C ~ +80°C Humidity: 80% R.H MAX

3. PART No.: NS 0 HG - 14 00 06- 19 G

Nano SIM CON. 0=WITHOUT POST HG=HINGE TYPE 14:HEIGHT 1.4mm

G=gold flash 19=Product Order Pin NO. 6=6Pin 00=NORMAL TYPE.(ON PCB)



⑤	TERMINAL	6	C5210-EH,T=0.12	Au 3u" PLATING
④	BASE INSULATOR	1	LCP+GF30%	BLACK
③	SHELL	1	SUS304-H,T=0.15	AU/Ni PLATING
NO.	PART NAME	Q'TY	DESCRIPTION	NOTE

UNLESS OTHERWISE SPECIFIED TOLERANCES		深圳市顺宏康科技有限公司			
DECIMALS:	ANGLES:	TITLE 6Pin 1.4H Hinge Nano SIM CARD CONN.			
X :±0.5	X :±2°	DWN	ALLEN	PART NO. SHK-10375	
X.X :±0.20	X.X :±1°	CHKD	KEVIN	SCALE:1:1	UNIT: mm
X.XX :±0.10		APVD	ERIC.W	SIZE: A3	SHEET:10F 1
		REV: A2			
CUSTOMER COPY					