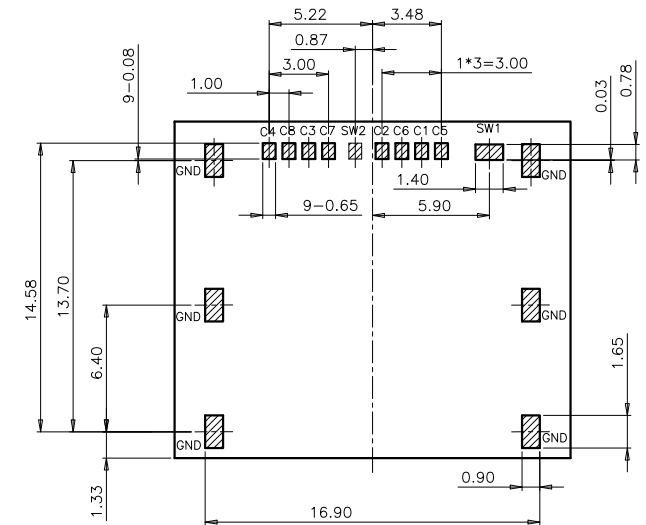
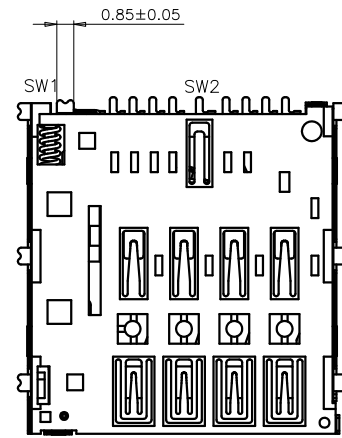
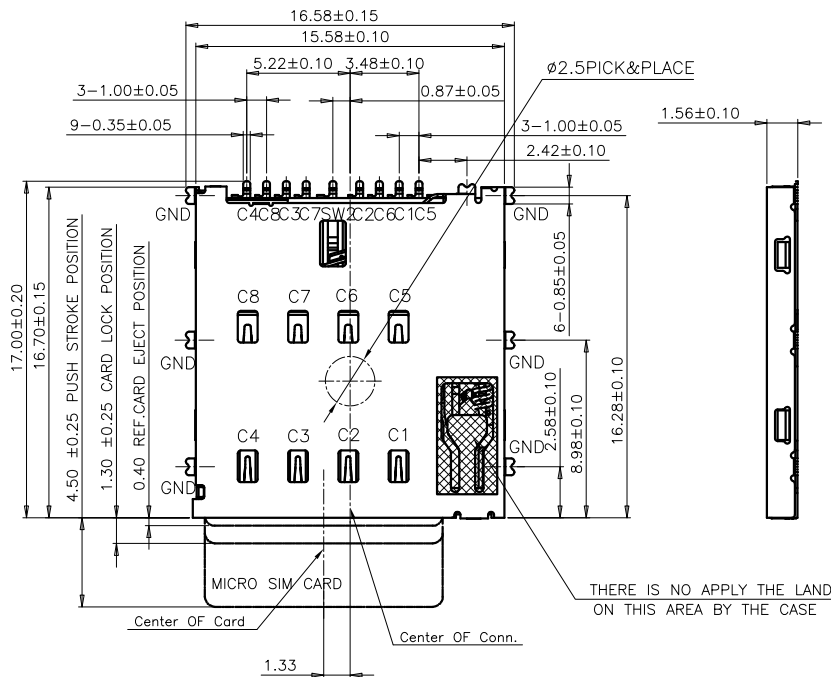


REV.	ECN NO OR DESCRIPTION	REVISED	DATE
1	PROPOSE ONLY	ALLEN	2017.12.07



DETECT SWITCH

CARD INSERTING POSITION	CLOSE	CLOSE	SW1	SW2
NO CARD	OPEN	OPEN	SW1	SW2

Card is not inserted;  
Sw2 and Sw1/GND pin is open  
Card is inserted;  
Sw2 and Sw1/GND pin is close

RECOMMENDED PCB LAYOUT TOP VIEW (TOLERANCE:±0.05) NO PATTERN AREA (TOLERANCE: ±0.05)  
RECOMMENDED MATAL MASK T=0.12MM

SMT SOLDER AREA

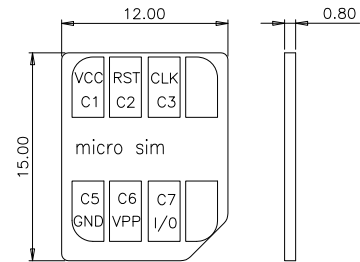
NOTES:

- MATERIAL:  
HOUSING:HI-TEMP. PLASIC UL 94V-0  
CONTACT:COPPER ALLOY  
SHELL:STAINLESS STEEL
- PLATING :  
TERMINAL:  
CONTACT AREA: Au GOLD FLASH.  
SOLDER AREA: AU GOLD FLASH.  
UNDER PLATE: NICKEL.  
SHELL: NICKEL PLATED OVER ALL.  
SOLDER AREA: GOLD FLASH.
- SPECIALITY:  
3.1 Rated current:1.0A  
3.2 Rated voltage:30V  
3.3 Contact Resistance:50mΩ MAX  
3.4 Insulation Resistance:1000MΩ MIN 500V DC  
3.5 Dielectric withstanding voltage: 500V AC.  
3.6 Solder ability:260+0/-5?? 30±10s.  
3.7 Durability:5000 Cycles Min.  
3.8 Operating condition:Temperature:-40℃~ +85℃  
Humidity 80% R.H MAX

PART No.:

MS 0 PP - 15 01 08- 45 GT

Micro SIM CON.  
0=WITHOUT POST  
PP=PUSH PUSH  
15:HEIGHT 1.56mm  
G=gold flash with Detect B type  
45=Product Order  
Pin No. 8=8Pin  
01=NORMAL TYPE.(ON PCB)



Connector Pin Assignment

No.	Pin Name	Description
①	C1	Vcc of SIM
②	C2	RST of SIM
③	C3	CLK of SIM
④	C5	GND of SIM
⑤	C6	Vpp of SIM
⑥	C7	I/O of SIM
⑦	SW	Detection Switch

6	Housing	1PC	LCP UL94V-0	BLACK
5	LINK	1PC	SUS304	
4	SPRING	1PC	SWP-B	plating Ni:30u"min
3	Slider	1PC	LCP UL94V-0	BLACK
2	COVER	1PC	SUS304	Slider platingAu: 1u",Ni:30u"min
1	Terminal	1PC	C5210-EH,T=0.20	Contact Au:1u",platingu: 1u",Ni:50u"min
NO	Description	Dosage	Material	Color/plating

UNLESS OTHERWISE SPECIFIED TOLERANCES

DECIMALS: ANGLES:  
X :±0.5 X :±2'  
X.X :±0.20 X.X :±1'  
X.XX :±0.10

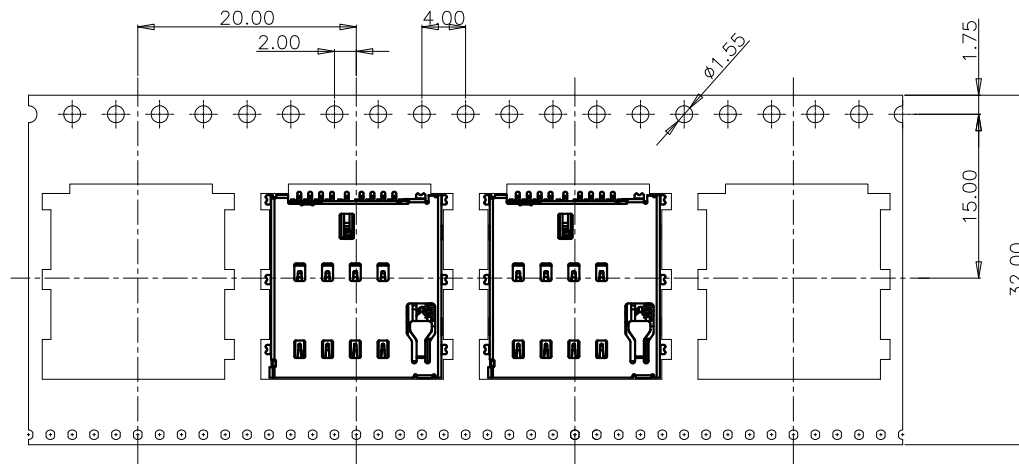
深圳市顺宏康科技有限公司

TITLE	8Pin 1.56H PUSH PUSH Micro SIM CARD CONN.			
DWN	ALLEN	PART NO.	SHK-10376	
CHKD	KEVIN	SCALE:1:1	UNIT: mm	
APVD	ERIC.W	SIZE: A3	SHEET:10F 1	REV: A2

CUSTOMER COPY

REV.	ECN NO OR DESCRIPTION	REVISED	DATE
▽	PROPOSE ONLY	ALLEN	2017.12.07

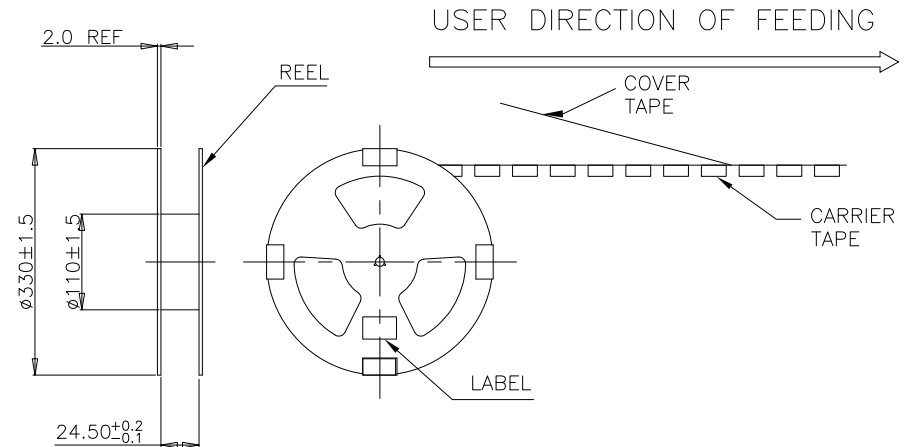
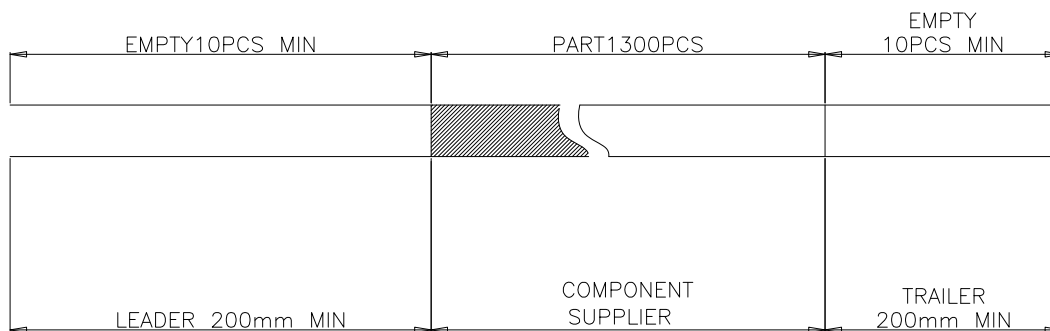
← PRODUCT PACKAGING DIRECTION  
 CUSTOMER TO USE DIRECTION →



产品料号	一盘产品数量	卷盘数量(N)	一箱产品数量
CONN. PART NO.	CONN. QTY./REEL	REEL QTY./CARTON	CONN. QTY./CARTON
MSOPP-150108-45GT	1300	8	10400 PCS

NOTES

1. NUMBER OF CONNECTORS: 1300PCS/REEL
2. LEAD TAPE LENGTH



3. QUANTITY: 10400PCS/CARTON
4. WEIGHT :
  - 4.1 NET WEIGHT : 7.98Kg
  - 4.2 GROSS WEIGHT : 10.29Kg

UNLESS OTHERWISE SPECIFIED TOLERANCES

DECIMALS:	ANGLES:
X : ±0.5	X : ±2°
X.X : ±0.20	X.X : ±1°
X.XX : ±0.10	

深圳市顺宏康科技有限公司

TITLE	8Pin 1.56H PUSH PUSH Micro SIM CARD CONN.			
DWN	ALLEN	PART NO.	SHK-10376	
CHKD	KEVIN	SCALE: 1:1	UNIT: mm	
APVD	ERIC.W	SIZE: A3	SHEET: 1 OF 1	REV: A2

CUSTOMER COPY