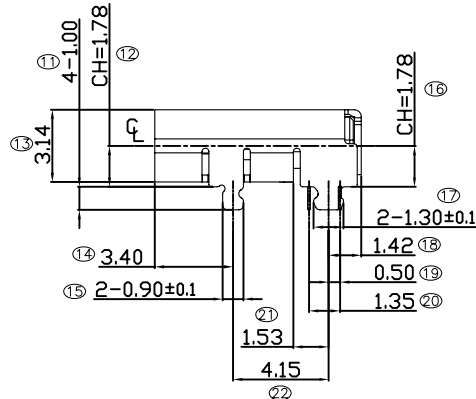
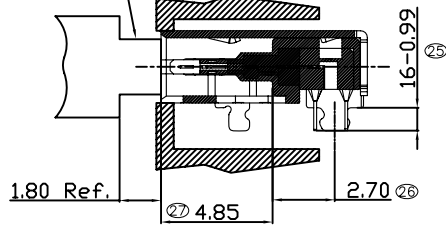


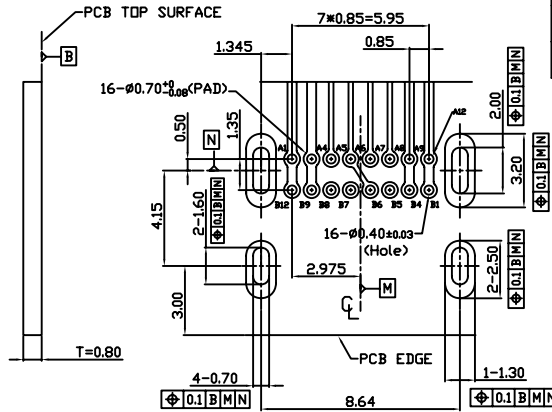
PCB BOTTOM SURFACE



USB TYPE C PLUG REF. ENCLOSURE DESIGN

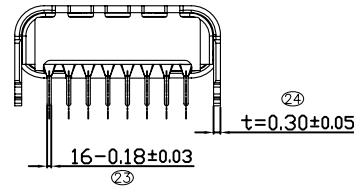


SECTION A-A'

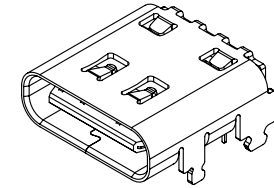


RECOMMENDED P.C.B LAYOUT

GENERAL TOLERANCE: ±0.05
PCB TOP SURFACE



REV	ECN No.	DATE	REMARK
A0	NEW	2017.09.28	NEW RELEASE
A1	ECN1805001	2018.05.03	变更新料号



NOTE:

- Material:**
All Housing: LCP,Black,Thermoplastics,UL94V-0(Halogen Free).
Contact: Copper Alloy
Shell: Stainless Stell.
Mid Shell Plate: Stainless Stell.
- FINISH:**
Contact: Au 1u" Plated on Contact Area,
80u" Min. Bright Tin Plated on Solder Area
30u" Min.Nickel Underplating Over All.
Shell: 50u" Min. Nickel plated Over All.
- Specification:**
3.1: Electrical:
Current Rating: 5A For Pin(A4,A9,B4,B9), 1.25A For Others Pin
Insulation Resistance: 100MΩ Min.
Contact Resistance: 50 mΩ Max.
Dielectric Withstanding Voltage: 100V/AC 1Minute
3.2: Mechanical Characteristic:
Insertion Force: 5~20N
Extraction Force: 0~1000 Cycles 8~20N.
1000~10000 Cycles 5~20N
Durability :10000 Cycles
4. Recommended process IR REFLOW:260°C, 3~5seconds.

TABLE 1

ITEM NO.	ITEM NAME	DESCRIPTION	QUANTITY
7	UP Terminal	Copper Alloy , Au 1u" Plated on contact Area	8PCS
6	Down Terminal	80u" Min. Bright Tin Plated on Solder Area	8PCS
5	Down Molding	LCP Black(Halogen Free),	1PCS
4	Upper Molding	LCP Black(Halogen Free),	1PCS
3	Body Second Molding	LCP Black(Halogen Free),	1PCS
2	Mid Shield Plate	Stainless Steel , SUS304 1/2H, Clear,No Plated	1PCS
1	Shell	Stainless steel, Nickel Plating over all	1PCS



Z-CF080SLB01R-A-68

MATERIAL NO.:

SEE THE TABLE
REVIEW TABLE FOR DETAILS

QUALITY SYMBOL	GENERAL TOLERANCES (UNLESS SPECIFIED)
0	X.XXXX ± ---
0	X.XXX ± 0.10
0	X.XX ± 0.25
0	X.X ± 0.30
0	ANGULAR ± ---°

THIS DRAWING CONTAINS INFORMATION THAT IS PROPRIETARY TO ZDT TECHNOLOGY. AND SHOULD NOT BE USED WITHOUT WRITTEN PERMISSION

<p>深圳市顺宏康科技有限公司</p>		<p>DRAWN BY SAM</p>	<p>DATE 2018.05.03</p>
<p>TITLE USB C TYPE F POWER 16P DIP ONLY CH=1.78, L=8.97MM</p>		<p>CHECKED BY JAY</p>	<p>DATE 2018.05.03</p>
<p>DOCUMENT NO. SHK-31384</p>	<p>SHEET NO. 1 OF 1</p>	<p>APPROVED BY JACKY</p>	<p>DATE 2018.05.03</p>
<p>DIMENSION STYLE MM ONLY</p>	<p>DESIGN UNITS METRIC</p>	<p>SCALE 5:1</p>	<p>THIRD ANGLE PROJECTION</p>

PIN ASSIGNMENT			
PIN NUMBER	SIGNAL NAME	PIN NUMBER	SIGNAL NAME
A1,A12,B1,B12	GND		
A2	SSRXp1	B11	SSRXp1
A3	SSRXn1	B10	SSRXn1
A4,A9,B4,B9	VBUS		
A5	CC1	B8	SBU2
A6	D+	B7	D-
A7	D-	B6	D+
A8	SBU1	B5	CC2
A10	SSRXn2	B3	SSTXn2
A11	SSRXp2	B2	SSTXp2