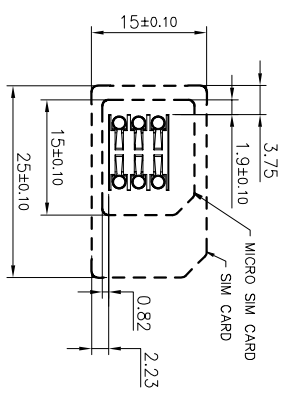
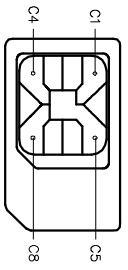
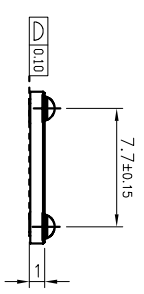
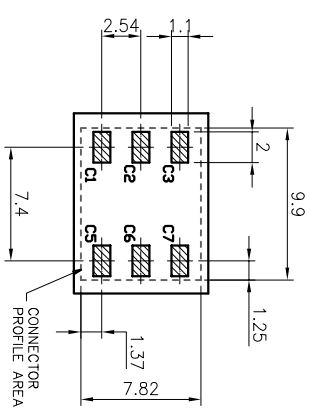
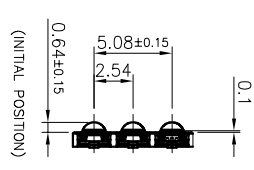


REV. 1	ECN NO. OR DESCRIPTION	REVISED	DATE
	PROPOSE ONLY	ALLEN	2014.02.10

【 SIM Card Pin Assignments 】

PIN	Name
C1	Vcc
C2	RST
C3	CLK
C4	Reserved
C5	GND
C6	Vpp
C7	I/O
C8	Reserved

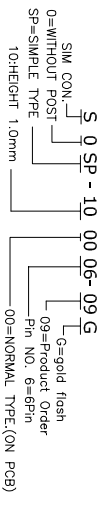


▨ SOLDERING AREA

Recommended PCB Layout  
(General tolerance:±0.05)

- NOTE:
- Material & Finish: Housing:High Temperature Thermoplastic,Color Black UL 94V-0 Contact&Detector:Phosphor Bronze, Shell&Lever:Stainless Steel, Gold Flash
  - Contract Area See Table , Solder Tail Gold Flash.
  - Circuit Diagram For Switch(see table A)
  - Specification:
    - 3-1.Current Rating :0.5mA max.
    - 3-2.Contact Resistance:100mOhms max
    - 3-3.Insulation Resistance:1000MOhms min./500VDC
    - 3-4.Dielectric Withstanding Voltage:500VAC/1minute
    - 3-5.Operating Temperature:-25C to+85C
    - 3-6.Mating Cycles:5,000 Insertions
  - Product Compliant to Rohs Directive 2002/95/EC and ELV 2000/53/EC
  - Please Contact KRCONN Sales Representative to Verify Product Details.

6. PART No.:



②	TERMINAL	6	C5210-EH,T=0.12	Au 5u" PLATING
①	BASE INSULATOR	1	LCP+GF30%	BLACK

NO.	PART NAME	Q'TY	DESCRIPTION	NOTE
UNLESS OTHERWISE SPECIFIED TOLERANCES				
<p style="text-align: center;"><b>深圳市顺宏康科技有限公司</b></p>				
TITLE 1.0H SIM CARD CONN.				
DWN ALLEN PART NO. 90SP-100006-09G				
CHKD KEVIN SCALE:1:1 UNIT: mm				
APVD ERIC.W SIZE: A3 SHEET:1OF 1 REV: A1				

DECIMALS:	ANGLES:	TITLE	SCALE:	UNIT:	SHEET:	REV:
X :±0.5	X :±2'	1.0H SIM CARD CONN.	1:1	mm	1 OF 1	A1
X.X :±0.20	X.X :±1'					
X.XX :±0.10						

3D view