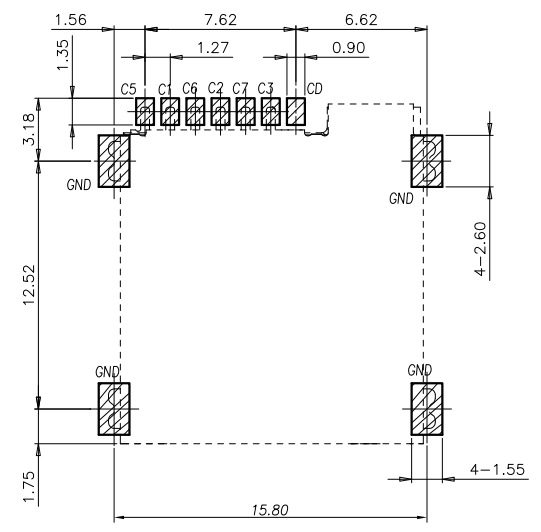
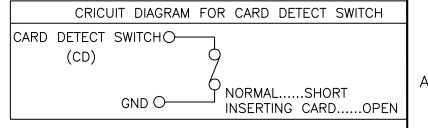
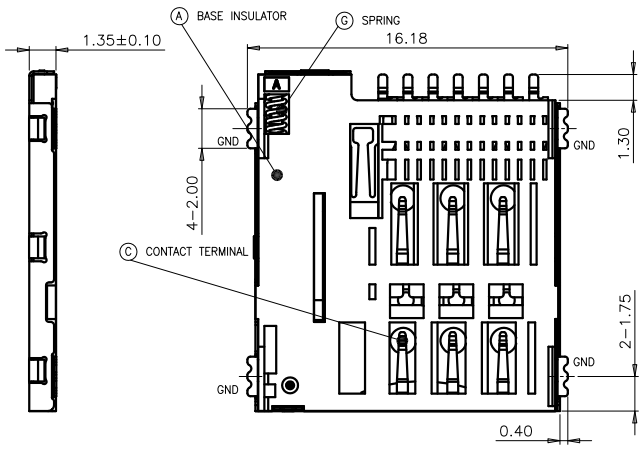
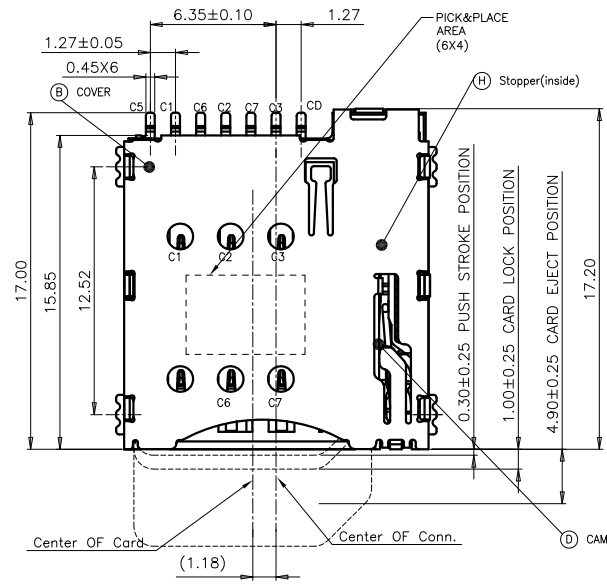
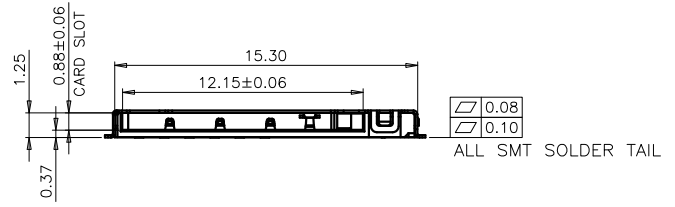
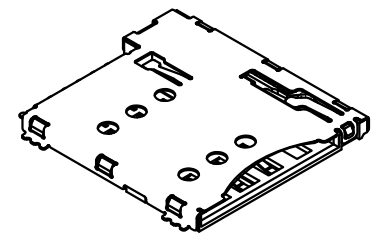


|          |                       |         |            |
|----------|-----------------------|---------|------------|
| REV.     | ECN NO OR DESCRIPTION | REVISED | DATE       |
| $\nabla$ | PROPOSE ONLY          | ALLEN   | 2018.10.18 |

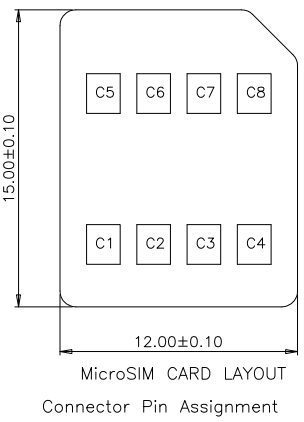


RECOMMENDED PCB LAYOUT TOP VIEW (TOLERANCE:±0.05)  
 RECOMMENDED METAL MASK T=0.12MM  
 NO PATTERN AREA (TOLERANCE: ±0.05)



(NOTE)  
 MATERIAL:  
 Insulator: High Temperature Thermoplastic  
 Contact: Copper Alloy  
 Shell: STAINLESS

PLATING:  
 Contact: Plated 30u" Ni Overall Contact G/F  
 Shell: Plated 30u" Ni Overall  
 Plated G/F Selective Contact Area  
 Electrical:  
 Current Rating :0.5mA max.  
 Voltage Rating :50V DC MAX  
 Ambient Temperature Range :-20°C~+85°C  
 Storage Temperature Range :-40°C~+70°C  
 Ambient Humidity Range :95% R.H. Max.  
 Contact Resistance:100m max.  
 Insulation Resistance:100M min./250V DC  
 Dielectric Withstanding Voltage:500V AC  
 Mating Cycles:5,000 Insertions  
 Temperature: 260°C ±5°



| MicroSIM CARD |          |
|---------------|----------|
| Pin No.       | NAME     |
| C1            | VCC      |
| C2            | RST      |
| C3            | CLK      |
| C4            | Reserved |
| C5            | GND      |
| C6            | VPP      |
| C7            | I/O      |
| C8            | Reserved |

| ITEM | PART NAME    | Q'TY | MATERIAL              | FINISH                   |
|------|--------------|------|-----------------------|--------------------------|
| 1    | HOUSING      | 1    | Hi-temp Thermoplastic | Black UL94V-0            |
| 2    | DATA CONTACT | 6    | Copper Alloy          | Contact area:Gold plated |
| 3    | SHELL        | 1    | Stainless Steel       | SMT area:Gold plated     |
| 4    | COIL SPRING  | 1    | SWP                   |                          |
| 5    | HEART CAM    | 1    | Hi-temp Thermoplastic | Black UL94V-0            |
| 6    | CAM PIN      | 1    | Stainless Steel       |                          |

UNLESS OTHERWISE SPECIFIED TOLERANCES

DECIMALS: ANGLES:

X :±0.5 X :±2°  
 X.X :±0.20 X.X :±1°  
 X.XX :±0.10

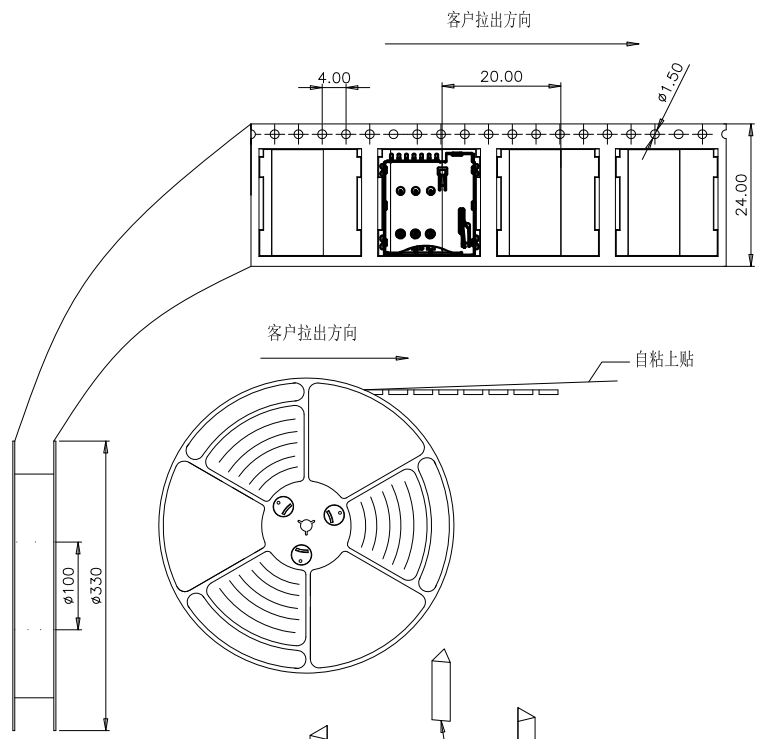
TITLE: 1.35mm (Detect)Push Micro SD CARD CONN.  
 DWN ALLEN PART NO. MSOPP-130006-03GT  
 CHKD KEVIN SCALE:1:1 UNIT: mm  
 APVD ERIC.W SIZE: A3 SHEET:1OF 1 REV: B

CUSTOMER COPY

深圳市顺宏康科技有限公司

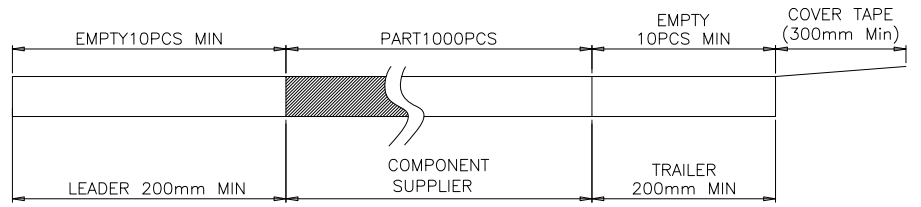
6. PART No.: MS 0 PP - 13 00 06- 03 G T  
 MicroSIM CON- T=with Detect  
 0=WITHOUT POST C=gold plating on contact  
 03=Product Order  
 PP=PUSH Type. Pin NO. 6=6Pin  
 13:HEIGHT 1.35mm 00=NORMAL TYPE.(ON PCB)

|      |                       |         |            |
|------|-----------------------|---------|------------|
| REV. | ECN NO OR DESCRIPTION | REVISED | DATE       |
| △    | PROPOSE ONLY          | ALLEN   | 2018.10.18 |

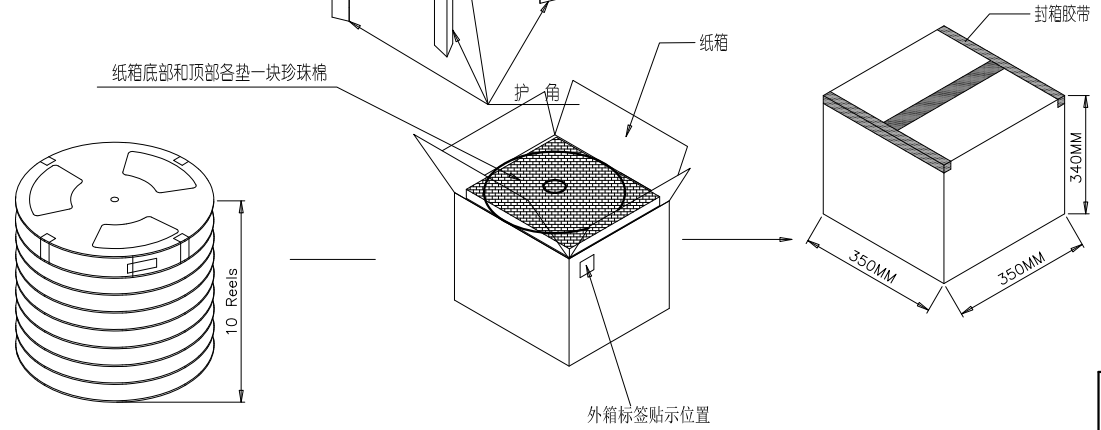


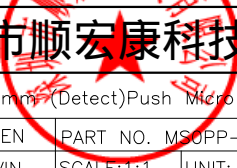
NOTES

1. NUMBER OF CONNECTORS:1000PCS/REEL
2. LEAD TAPE LENGTH



3. QUANTITY:10000PCS/CARTON



|                                       |          |   |        |                            |             |
|---------------------------------------|----------|---|--------|----------------------------|-------------|
| UNLESS OTHERWISE SPECIFIED TOLERANCES |          |  <b>深圳市顺宏康科技有限公司</b> |        |                            |             |
| DECIMALS:                             | ANGLES:  |   |        |                            |             |
| X :±0.5                               | X :±2°   | DWN   | ALLEN  | PART NO. MSOPP-130006-03GT |             |
| X.X :±0.20                            | X.X :±1° | CHKD  | KEVIN  | SCALE:1:1                  | UNIT: mm    |
| X.XX :±0.10                           |          | APVD  | ERIC.W | SIZE: A3                   | SHEET:10F 1 |
|                                       |          | REV: B  |        |                            |             |
| CUSTOMER COPY                         |          |   |        |                            |             |