

1

2

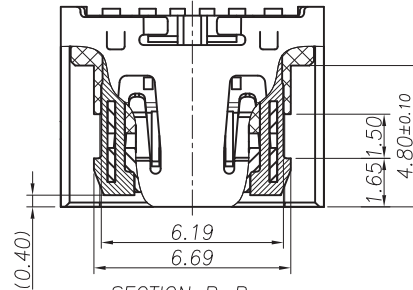
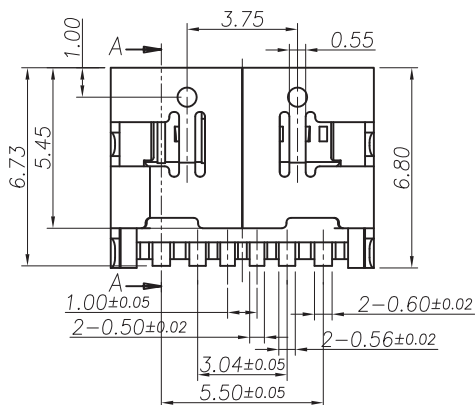
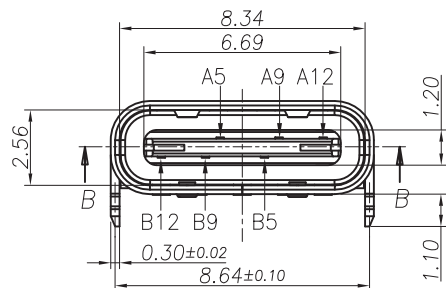
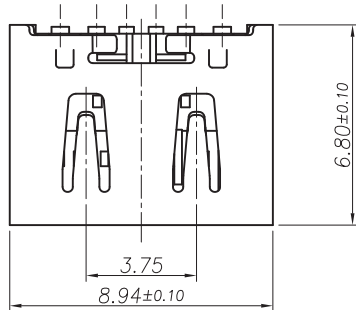
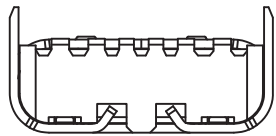
3

4

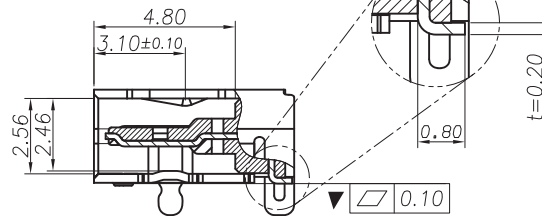
5

6

REV.	ECN NO OR DESCRIPTION	REVISED	DATE
A	PROPOSE ONLY	ERIC	4

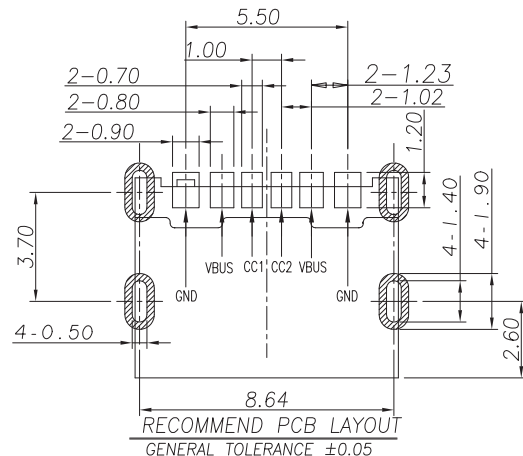
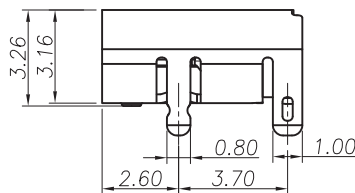


SECTION B-B
Scale:1/1



SECTION A-A
Scale:1/1

ALL SMT SOLDER TAILS



RECOMMEND PCB LAYOUT
GENERAL TOLERANCE ±0.05

NOTES:

1. MATERIAL:

1.1 Housing:High Temperature Thermoplastic
UL94V-0; Color Black.

1.2 Terminal:Copper Alloy.

1.3 Shell:Stainless Steel

2. SPECIALITY:

2.1 Rated current:3A

2.2 Rated voltage:10V

2.3 Contact Resistance:50m OHMS MAX

2.4 Insulation Resistance:100M OHMS MIN 100V DC

2.5 Dielectric withstanding voltage: 100V AC.

2.6 Solder ability:235±5 °C 5±0.5s.

2.7 Durability:5000 Cycles Min.

2.8 Operating condition:Temperature-40°C~ +85°C
Humidity 80% R.H MAX

3. PLEASE CONTACT KRCONN SALES REPRESENTATIVE TO VERIFY
PRODUCT DETAILS & AVAILABILITY

PIN NO.	PIN NAME
A 5	CC1
A 9	V BUS
A 12	GND
B 5	CC2
B 9	V BUS
B 12	GND

NO.	DESCRIPTION	QTY	MATERIAL	NOTE
3	TERMINAL	6	COOPER ALLOY	CONTACT Au OVER ALL:
2	SHELL	1	STAINLESS STEEL	PAD Au OVER ALL:
1	HOUSING	1	THERMOPLASTIC	UL 94V-0

UNLESS OTHERWISE SPECIFIED TOLERANCES

深圳市顺宏康科技有限公司

DECIMALS:	ANGLES:	TITLE	6pin TYPE.C CONN. SHK-31016		
X :±0.5	X :±2°	DWN	Johnie	PART NO.	
X.X :±0.20	X.X :±1°	CHKD	Kevin.d	SCALE:1:1	UNIT: mm
X.XX :±0.10		APVD	Simon.Mo	SIZE: A4	SHEET:10F1
					REV: B
CUSTOMER COPY					