

Note:

1. Material:

- 1.1 Housing: thermoplastic high temp. UL94V-0; Color: natural.
- 1.2 Latch: thermoplastic high temp. UL94V-0; Color: black.
- 1.3 Terminal: copper alloy T=0.20mm
- 1.4 Fitting Nail: copper alloy T=0.20mm

2. Finsh:

- 2.1 Terminal:
Underplating: matt Tin overall.
- 2.2 Fitting Nail:
Underplating: matt Tin overall.

3. Product must comply HF RoHS specification.

PART NO. SPEC

AF2F XX B * S O T 1 0_QQ01

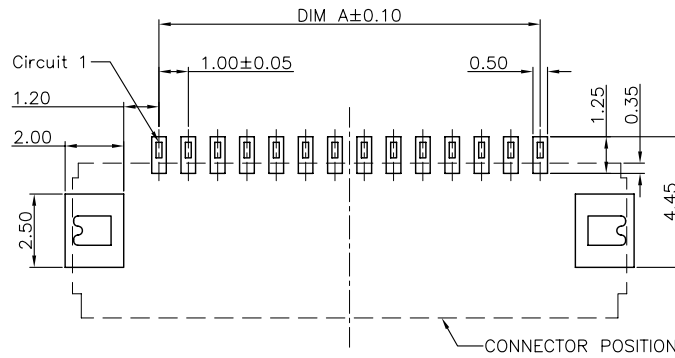
NO. OF CKTS

CONTACT TYPE
A:Upper
B:Lower

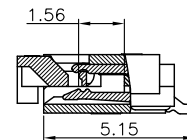
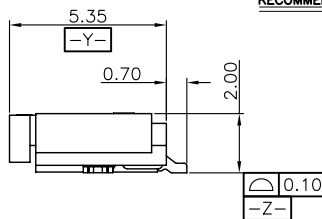
PACKING CODE
P:Tape & Reel
T:Tube

PLATING CODE

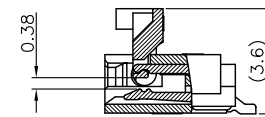
0:MATT-Tin 90-120u"
1:GOLD FLASH 1u"
2:GOLD FLASH 2u"
3:GOLD FLASH 3u"
A:Point Gold-plated 1u"
B:Point Gold-plated 2u"
C:Point Gold-plated 3u"



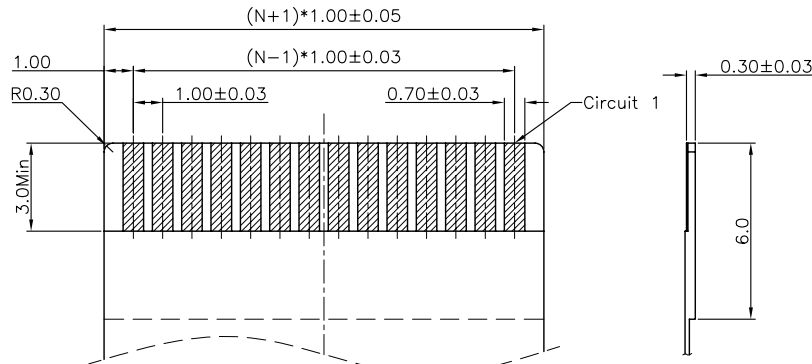
RECOMMENDED P.C.B PATTERN LAYOUT



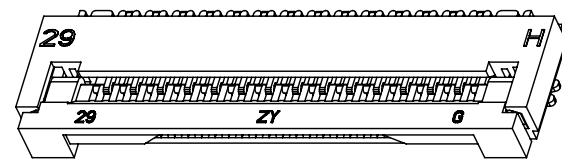
SECTION A-A
SCALE 1:1



SECTION A-A
SCALE 1:1



RECOMMENDED FPC/FFC DIMENSION



CKTS	DIM A	DIM B	DIM C
2	1.00	3.10	6.90
3	2.00	4.10	7.90
4	3.00	5.10	8.90
5	4.00	6.10	9.90
6	5.00	7.10	10.90
7	6.00	8.10	11.90
8	7.00	9.10	12.90
9	8.00	10.10	13.90
10	9.00	11.10	14.90
11	10.00	12.10	15.90
12	11.00	13.10	16.90
13	12.00	14.10	17.90
14	13.00	15.10	18.90
15	14.00	16.10	19.90
16	15.00	17.10	20.90
17	16.00	18.10	21.90
18	17.00	19.10	22.90
19	18.00	20.10	23.90
20	19.00	21.10	24.90
21	20.00	22.10	25.90
22	21.00	23.10	26.90
23	22.00	24.10	27.90
24	23.00	25.10	28.90
25	24.00	26.10	29.90
26	25.00	27.10	30.90
27	26.00	28.10	31.90
28	27.00	29.10	32.90
29	28.00	30.10	33.90

CUSTOMER DRAWING		深圳市顺宏康科技有限公司	
Tolerance (未注公差): 0.0 ±0.15 0° - ±5° 0.00 ±0.10 0° 0 ±3° 0.000 ±0.05 0° 00 ±1°	Size (图幅): A4 Unit (单位): MM Scale (比例): 1:1	Product Name (产品名称): 1.0Pitch H=2.0 FPC Easy-on CONN. R/A SMT TYPE	
Project View (投影视角): 1 QF 1 Rev (版本): A		Product No (产品料号): AF2FXXB*SOT10_QQ01 SHK-10268	
Rev (版本): A	Designer (设计): Steven 12/23'11	Checked (审核): Allan 12/23'11	Approved (核准):

Rev	Change Description	Date	Revisor
1	初版发行	2011/12/23	Allan
2	变更内容	日期	制/修订人