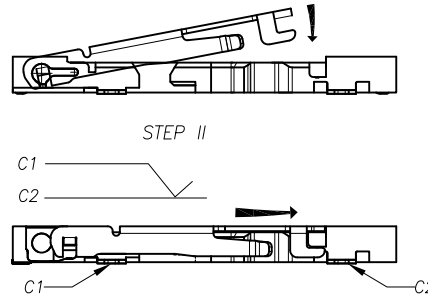
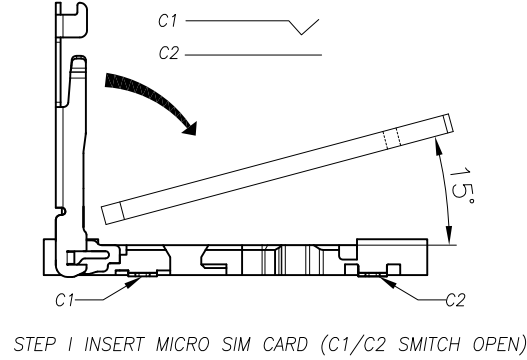
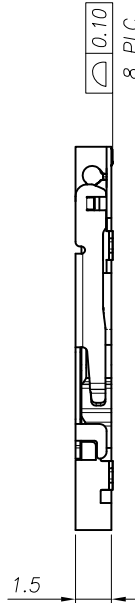
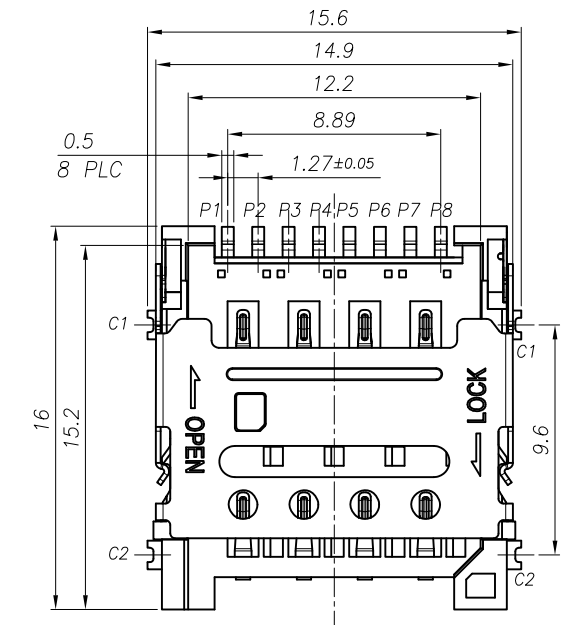
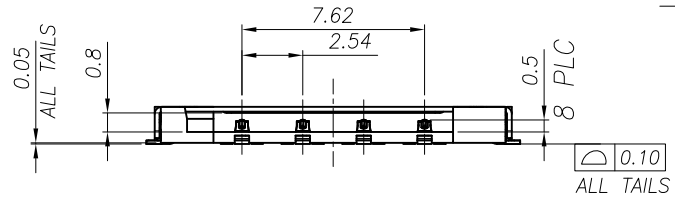
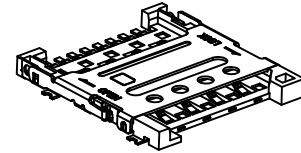
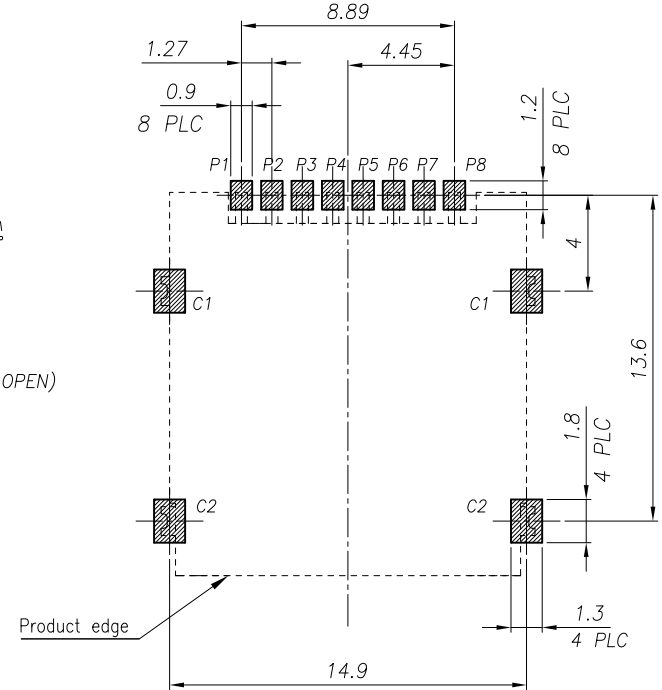


REV.	ECN NO OR DESCRIPTION	REVISED	DATE
▽	PROPOSE ONLY	ALLEN	2014.08.03



STEP III PUSH SHELL (C1/C2 SWITCH LOCK)



NOTES:  
 1) MATERIAL:  
 HOUSING: LCP E130i UL 94V-0  
 CONTACT: C5210R-H T=0.15mm  
 SHELL: SUS201-H T=0.20mm  
 2) FINISH:  
 CONTACT: GOLD FLASH PLATED ON CONTACT AREA 1u"Min ;  
 GOLD FLASH PLATING ON SOLDER TAILS 1u"Min,  
 WITH ENTIRE CONTACT UNDERPLATED NICKEL 50u"Min  
 SHELL: NICKEL UNDERPLATED OVERALL 50u"Min,  
 3) MECHANICAL CHARACTERISTICS  
 CONTACT RETENTION: 50gf/pin Min  
 MATING CYCLE: 3000 CYCLES  
 4) ELECTRICAL CHARACTERISTICS  
 RATING CURRENT: 1A  
 RATING VOLTAGE: 30V  
 CONTACT RESISTANCE: 30 MILLOHMS OHMS MAX  
 INSULATION RESISTANCE:  
 a, UNMATED: 1000M OHMS MIN  
 b, MATED: 100M OHMS MIN  
 DIELECTRIC WITHSTANDING VOLTAGE:  
 500V AC/1MINUTE  
 OPERATING TEMPERATURE: -25°C--+70°C  
 STORAGE TEMPERATURE: -10°C--+40°C



MICRO SIM CARD	
PIN NO.	DESCRIPTION
P1	VCC
P2	GND
P3	RST
P4	VPP
P5	CLK
P6	I/O
P7	RESERVED
P8	RESERVED

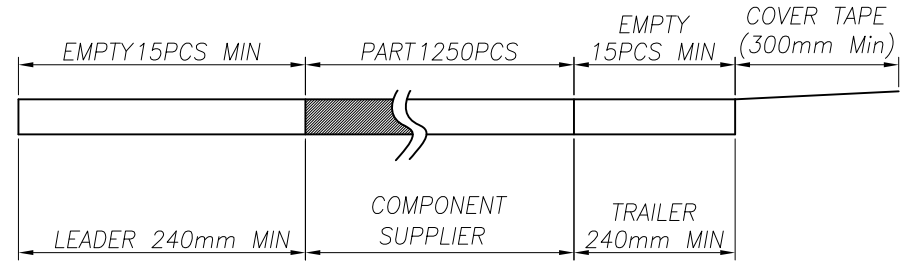
③	TERMINAL	8	C5210-EH,T=0.12	Au 5u" PLATING
②	BASE INSULATOR	1	LCP+GF30%	BLACK
①	SHELL	1	SUS304-H,T=0.12	AU/Ni PLATING
NO.	PART NAME	Q'TY	DESCRIPTION	NOTE

UNLESS OTHERWISE SPECIFIED TOLERANCES		<b>深圳市顺宏康科技有限公司</b>			
DECIMALS:	ANGLES:	TITLE	8Pin 1.5H HINGE Micro SIM CARD CONN.		
X :±0.5	X :±2°	DWN	ALLEN	PART NO.	SHK-10366
X.X :±0.20	X.X :±1°	CHKD	KEVIN	SCALE:1:1	UNIT: mm
X.XX :±0.10		APVD	ERIC.W	SIZE: A3	SHEET:10F 1
					REV: A1
CUSTOMER COPY					

REV.	ECN NO OR DESCRIPTION	REVISED	DATE
▽	PROPOSE ONLY	ALLEN	2014.08.03

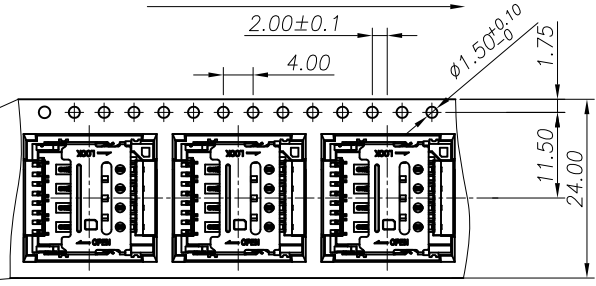
NOTES

1. NUMBER OF CONNECTORS: 1250PCS/REEL
2. LEAD TAPE LENGTH



3. QUANTITY: 12500PCS/CARTON
4. WEIGHT :
  - 3.1 NET WEIGHT : 2.4Kg
  - 3.2 GROSS WEIGHT : 6.5Kg

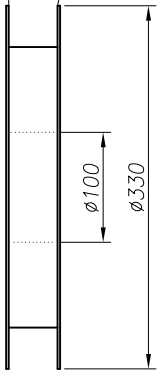
User Direction of Unreeling



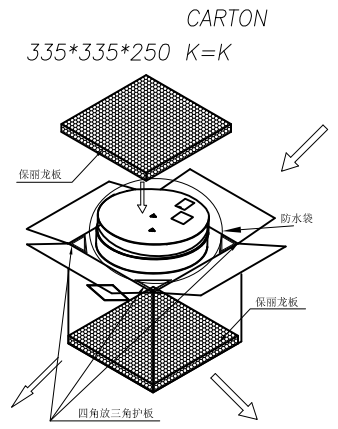
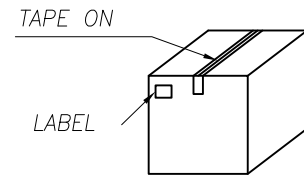
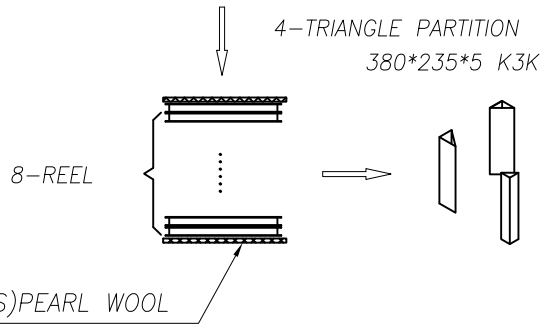
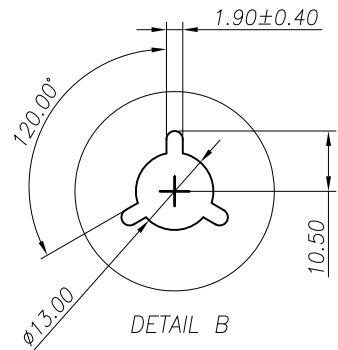
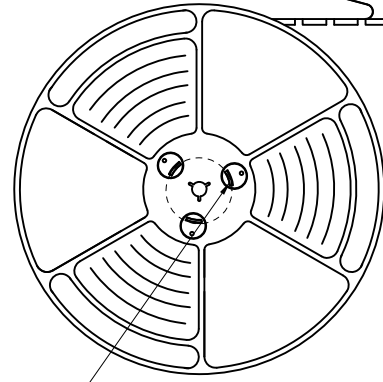
COVER TAPE PEELING ANGLE: 165°~180°  
PEELING FORCE: 20~130g

CARRIER TAPE

User Direction of Unreeling



DETAIL B



UNLESS OTHERWISE SPECIFIED TOLERANCES		深圳市顺宏康科技有限公司			
DECIMALS:	ANGLES:	TITLE	8Pin 1.5H HINGE Micro SIM CARD CONN. 包装规范		
X :±0.5	X :±2°	DWN	ALLEN	PART NO.	SHK-10366
X.X :±0.20	X.X :±1°	CHKD	KEVIN	SCALE: 1:1	UNIT: mm
X.XX :±0.10		APVD	ERIC.W	SIZE: A3	SHEET: 10F 1
		REV: A1			
CUSTOMER COPY					

