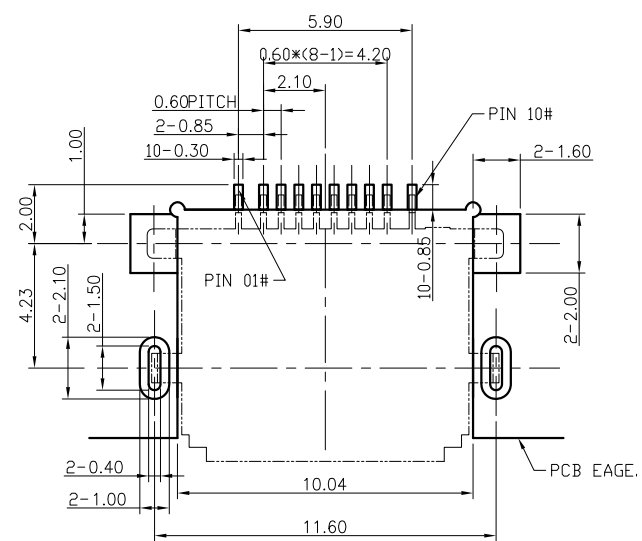
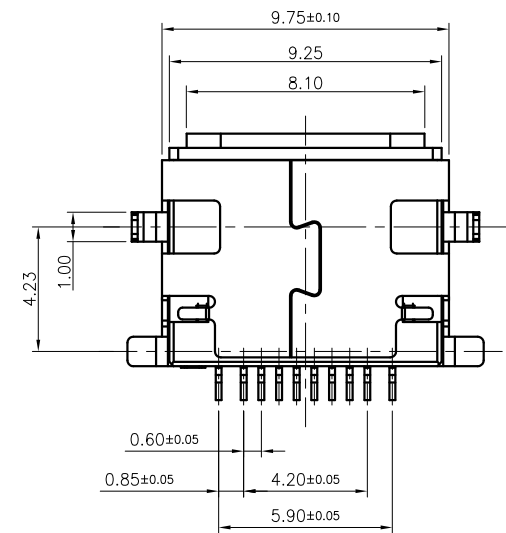
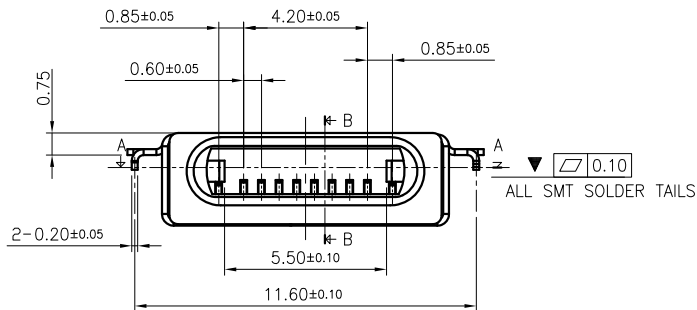
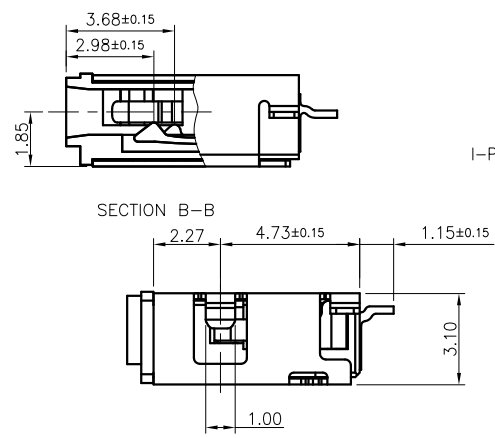
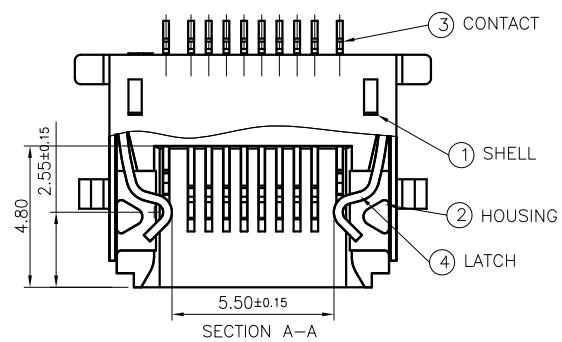
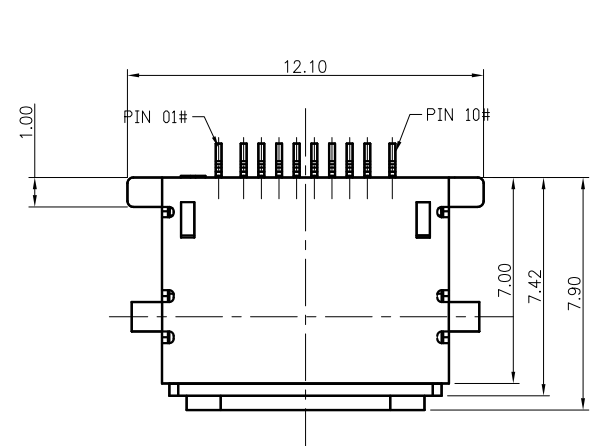


REV.	ECN NO OR DESCRIPTION	REVISED	DATE
A	PROPOSE ONLY	ERIC	2012/07/14
B	MODIFY shell PAD DIM.	ERIC	2016/08/22

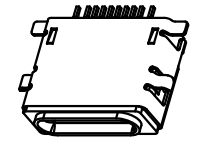
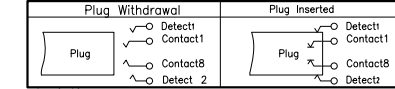


RECOMMEND PCB LAYOUT
GENERAL TOLERANCE ±0.05

NOTE:

△ Material & Finish See Table;

2. Circuit Diagram For Switch

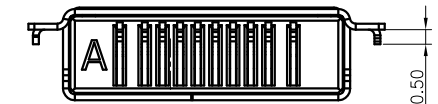


3. Characteristic:

- 3-1. Current Rating :1.5A max.; Voltage Rating: 30V
- 3-2. Contact Resistance: 50mOhms max
- 3-3. Insulation Resistance: 100MOhms min./500VDC
- 3-4. Dielectric Withstanding Voltage: 500VAC/1minute
- 3-5. Mating Force: 15N Max, Withdrawal Force: 3N Min.;
- 3-6. Durability: 5000 Cycles
- 3-7. Operating Temperature: -25°C to +85°C
- 4. Critical Dimensions Marked "▼" Should Check By QC.
- 5. Please Contact KRCONN Sales Representative to Verify Product Details.
- 6. PART No.:

IP O F - 07 02 10- 01 G *

- I-Phone I/O SYS.
- 0=WITHOUT POST
- F=Female
- 07:HEIGHT 0.7mm
- *=SEE TALBLE(1)
- G=gold flash(shell)
- 01=Product Order
- Pin NO. 10=10Pin
- 02=LOW PCB



PIN NO.	SIGNAL
PIN 1#	DETECT1
PIN 2#	GND
PIN 3#	DP1
PIN 4#	DN1
PIN 5#	ACC1
PIN 6#	PWR IN
PIN 7#	DN2
PIN 8#	DP2
PIN 9#	ACC2
PIN 10#	DETECT2
SHELL	GND

TABLE(1)

PART NO.	HOUSING COLOR	DIM:A
IPOF-070210-01G	BLACK 黑色	7.70
IPOF-070210-01GW	WHITE 白色	7.70
IPOF-070210-01GL	BLACK 黑色	7.90
IPOF-070210-01GLW	WHITE 白色	7.90

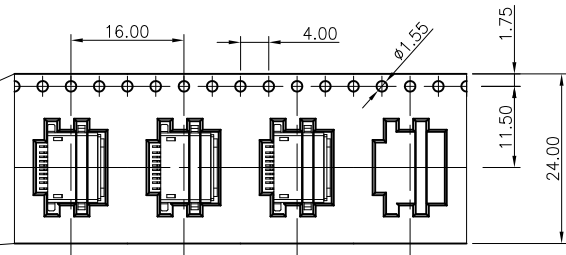


④	LATCH	1	Stainless Steel	No Plated
③	CONTACT	10	COPPER OLLAY	Gold Flash
②	HOUSING	1	THERMOPLASTIC	COLOR:SEE TABLE(1)
①	SHELL	1	Stainless Steel	Ni 50u";Gold flash on Solder
NO.	DESCRIPTION	QT'Y	MATERIAL	NOTE

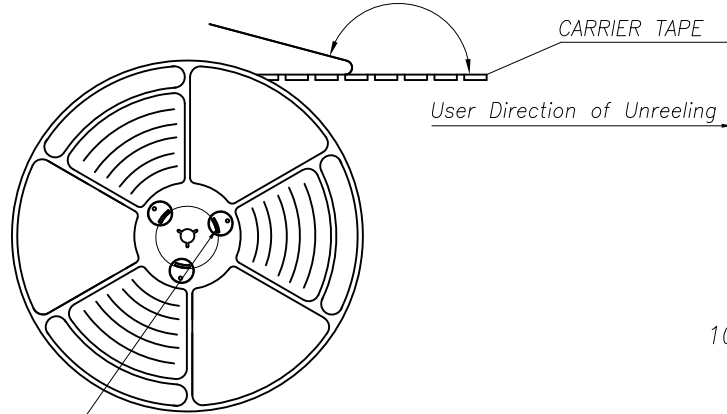
UNLESS OTHERWISE SPECIFIED TOLERANCES		深圳市顺宏康科技有限公司			
DECIMALS:	ANGLES:	TITLE	I-Phone 10pin I/O SYS. CONN.(LOW PCB 2.4mm)		
X :±0.5	X :±2°	DWN	Johnie	PART NO.	SHK-20396
X.X :±0.20	X.X :±1°	CHKD	Kevin.d	SCALE:1:1	UNIT: mm
X.XX :±0.10		APVD	Simon.Mo	SIZE: A4	SHEET:10F1
		CUSTOMER COPY		TEL:0755-26561502	

REV.	ECN NO OR DESCRIPTION	REVISED	DATE
A	PROPOSE ONLY	ERIC	2012/07/14
B	MODIFY shell PAD DIM.	ERIC	2016/08/22

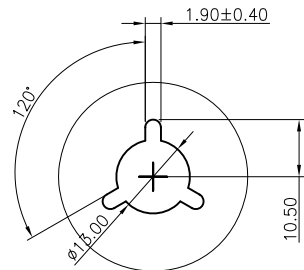
User Direction of Unreeling



COVER TAPE PEELING ANGLE: 165°~180°
PEELING FORCE: 20~130g



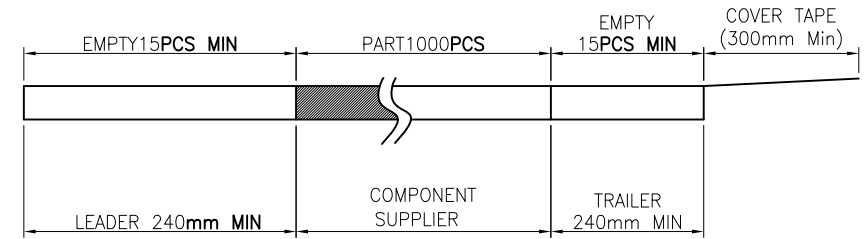
DETAIL B



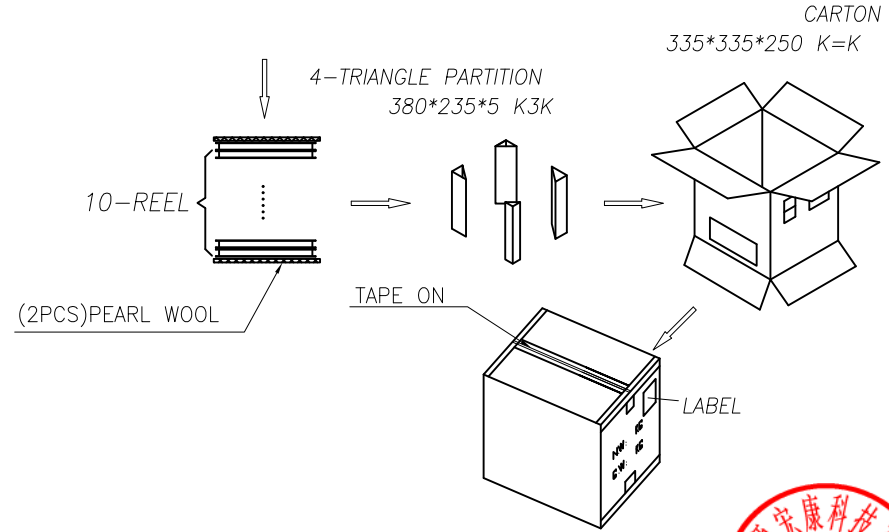
DETAIL B

NOTES

1. NUMBER OF CONNECTORS: 1000PCS/REEL
2. LEAD TAPE LENGTH



3. QUANTITY: 10,000PCS/CARTON
4. WEIGHT :
 - 3.1 NET WEIGHT : 2.4Kg
 - 3.2 GROSS WEIGHT : 6.5Kg



UNLESS OTHERWISE SPECIFIED TOLERANCES		深圳市顺宏康科技有限公司			
DECIMALS:	ANGLES:	TITLE	I-Phone 10pin I/O SYS. CONN.(LOW PCB 2.4mm)		
X :±0.5	X :±2°	DWN	Johnie	PART NO.	SHK-20396
X.X :±0.20	X.X :±1°	CHKD	Kevin.d	SCALE:1:1	UNIT: mm
X.XX :±0.10		APVD	Simon.Mo	SIZE: A4	SHEET:10F1
				CUSTOMER COPY	TEL:0755-26561502