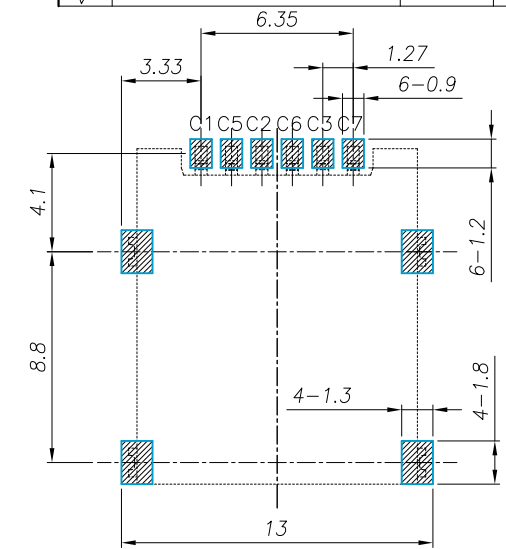
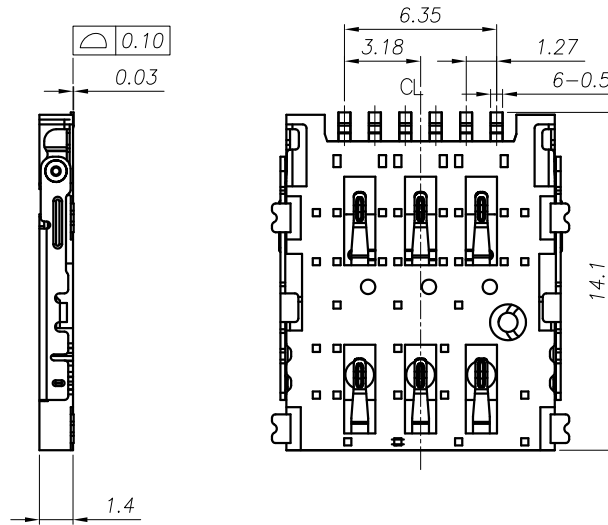
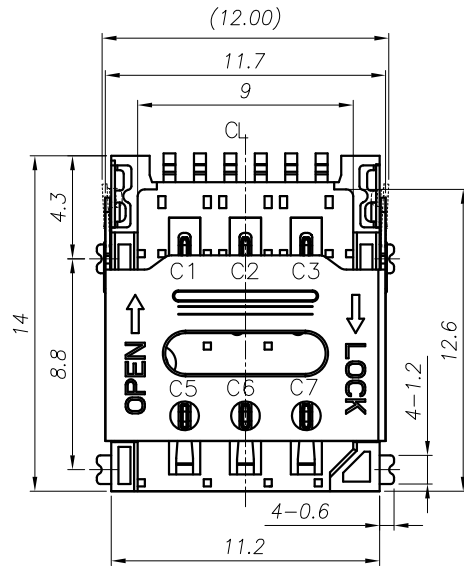
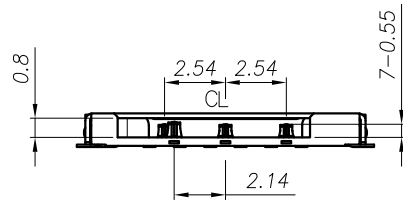


REV.	ECN NO OR DESCRIPTION	REVISED	DATE
▽	PROPOSE ONLY	ALLEN	2016.04.04

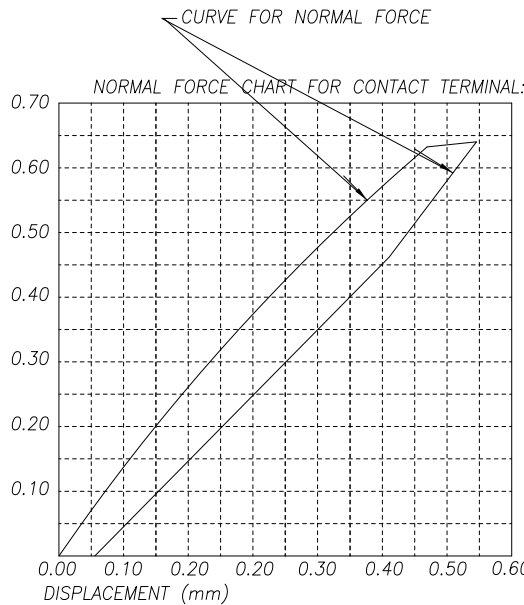
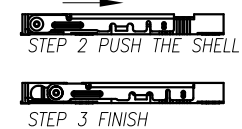
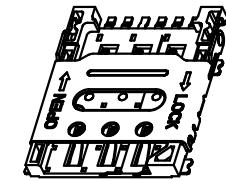
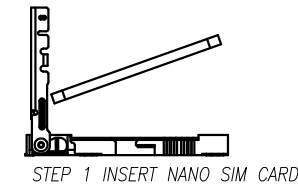
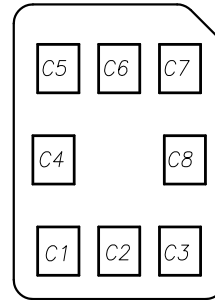


RECOMMENDED PCB LAYOUT TOP VIEW (TOLERANCE:±0.05)
RECOMMENDED METAL MASK T=0.12MM



【 SIM Card Pin Assignments 】

PIN	Name
C1	Vcc
C2	RST
C3	CLK
C4	Reserved
C5	GND
C6	Vpp
C7	I/O
C8	Reserved



- NOTES:
- MATERIAL:
 - Housing: High Temperature Thermoplastic UL94V-0; Color Black.
 - Terminal: Copper Alloy, T=0.12mm.
 - Shell: Stainless Steel, T=0.20mm.
 - FINISH:
 - Terminal: Plated Gold on the Contact Area and Solder Tails
 - Peg: Plated Gold on the Solder Tails.
 - SPECIALITY:
 - Rated current: 0.5A
 - Rated voltage: 50V
 - Contact Resistance: 80mΩ MAX
 - Insulation Resistance: 100MΩ MIN 100V DC
 - Dielectric withstanding voltage: 100V AC.
 - Solder ability: 245±5°C, 5±0.5s.
 - Operating condition: Temperature: -30°C ~ +80°C Humidity: 80% R.H MAX

NS 0 HG - 14 00 06 - 19 G

Nano SIM CON. G=gold flash
 0=WITHOUT POST 19=Product Order
 HG=HINGE TYPE Pin NO. 6=6Pin
 14:HEIGHT 1.4mm 00=NORMAL TYPE.(ON PCB)

③	TERMINAL	6	C5210-EH,T=0.12	Au 3u" PLATING
②	BASE INSULATOR	1	LCP+GF30%	BLACK
①	SHELL	1	SUS304-H,T=0.15	AU/Ni PLATING
NO.	PART NAME	Q'TY	DESCRIPTION	NOTE

UNLESS OTHERWISE SPECIFIED TOLERANCES

DECIMALS: X :±0.5 X.X :±0.20 X.XX :±0.10

ANGLES: X :±2° X.X :±1°

TITLE: 6Pin 1.4H Hinge Nano SIM CARD CONN.

DWN ALLEN PART NO. NSOHG-140006-19G

CHKD KEVIN SCALE:1:1 UNIT: mm

APVD ERIC.W SIZE: A3 SHEET:10F 1 REV: A2

CUSTOMER COPY

深圳市顺宏康科技有限公司