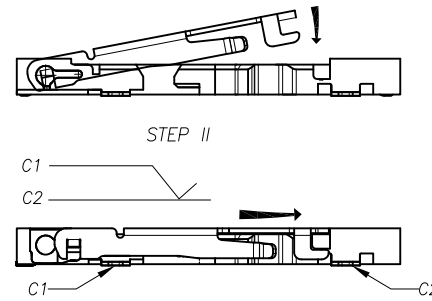
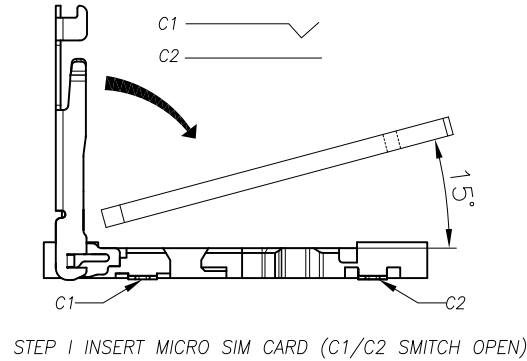
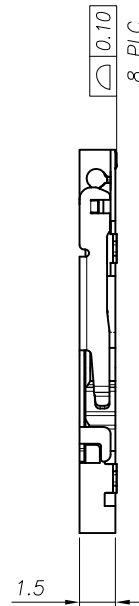
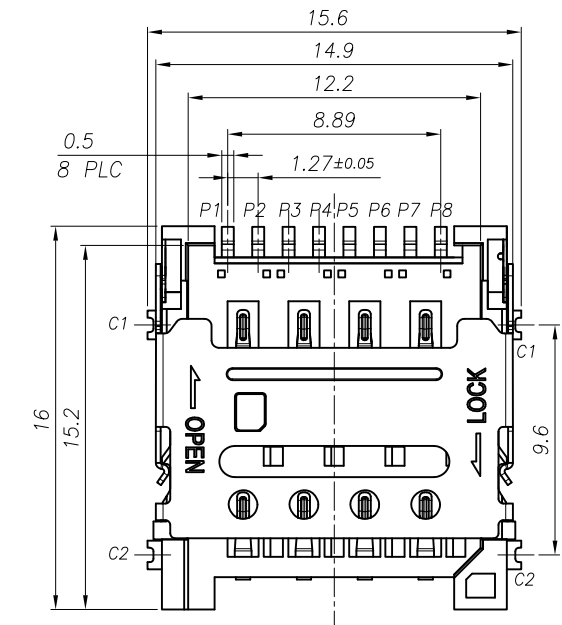
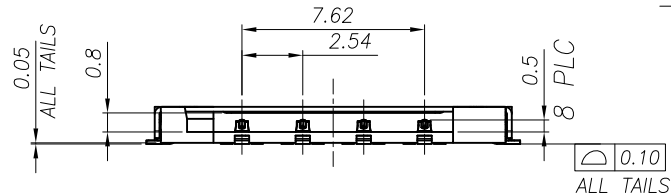
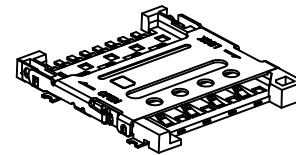
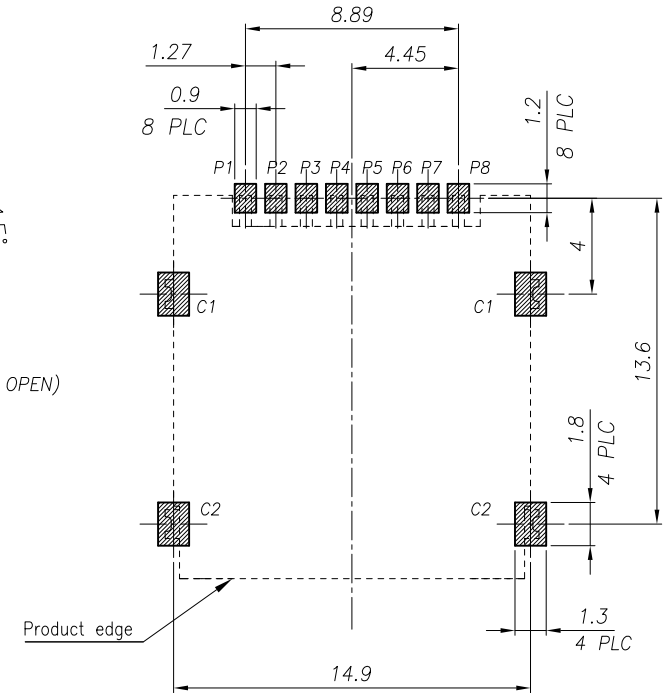


REV.	ECN NO OR DESCRIPTION	REVISED	DATE
▽	PROPOSE ONLY	ALLEN	2014.08.03



STEP III PUSH SHELL (C1/C2 SWITCH LOCK)



NOTES:

- MATERIAL:
HOUSING: LCP E130i UL 94V-0
CONTACT: C5210R-H T=0.15mm
SHELL: SUS201-H T=0.20mm
- FINISH:
CONTACT: GOLD FLASH PLATED ON CONTACT AREA 1u"Min ;
GOLD FLASH PLATING ON SOLDER TAILS 1u"Min,
WITH ENTIRE CONTACT UNDERPLATED NICKEL 50u"Min
SHELL: NICKEL UNDERPLATED OVERALL 50u"Min,
- MECHANICAL CHARACTERISTICS
CONTACT RETENTION: 50gf/pin Min
MATING CYCLE: 3000 CYCLES
- ELECTRICAL CHARACTERISTICS
RATING CURRENT: 1A
RATING VOLTAGE: 30V
CONTACT RESISTANCE: 30 MILLOHMS OHMS MAX
INSULATION RESISTANCE:
a, UNMATED: 1000M OHMS MIN
b, MATED: 100M OHMS MIN
DIELECTRIC WITHSTANDING VOLTAGE:
500V AC/1MINUTE
OPERATING TEMPERATURE: -25°C--+70°C
STORAGE TEMPERATURE: -10°C--+40°C

MICRO SIM CARD	
PIN NO.	DESCRIPTION
P1	VCC
P2	GND
P3	RST
P4	VPP
P5	CLK
P6	I/O
P7	RESERVED
P8	RESERVED

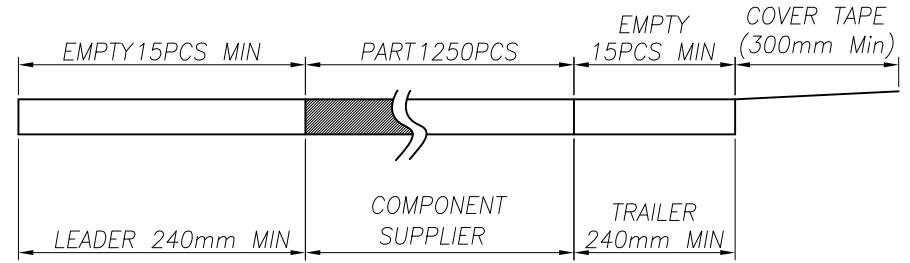
③	TERMINAL	8	C5210-EH,T=0.12	Au 5u" PLATING
②	BASE INSULATOR	1	LCP+GF30%	BLACK
①	SHELL	1	SUS304-H T=0.12	AU/Ni PLATING
NO.	PART NAME	Q'TY	DESCRIPTION	NOTE

UNLESS OTHERWISE SPECIFIED TOLERANCES					
DECIMALS:	ANGLES:	TITLE	8Pin 1.5H HINGE Micro SIM CARD CONN.		
X :±0.5	X :±2°	DWN	ALLEN	PART NO. SOHG-150008-08G	
X.X :±0.20	X.X :±1°	CHKD	KEVIN	SCALE:1:1	UNIT: mm
X.XX :±0.10		APVD	ERIC.W	SIZE: A3	SHEET:10F 1
		REV: A1			
CUSTOMER COPY					

REV.	ECN NO OR DESCRIPTION	REVISED	DATE
▽	PROPOSE ONLY	ALLEN	2014.08.03

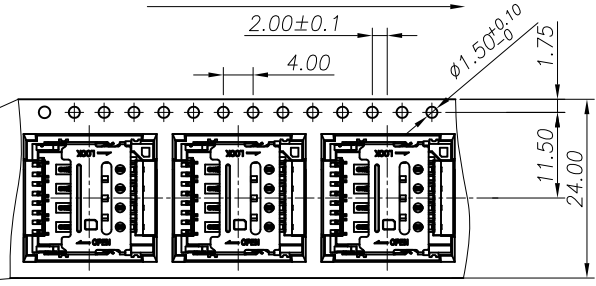
NOTES

1. NUMBER OF CONNECTORS: 1250PCS/REEL
2. LEAD TAPE LENGTH



3. QUANTITY: 12500PCS/CARTON
4. WEIGHT :
 - 3.1 NET WEIGHT : 2.4Kg
 - 3.2 GROSS WEIGHT : 6.5Kg

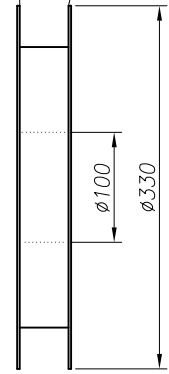
User Direction of Unreeling



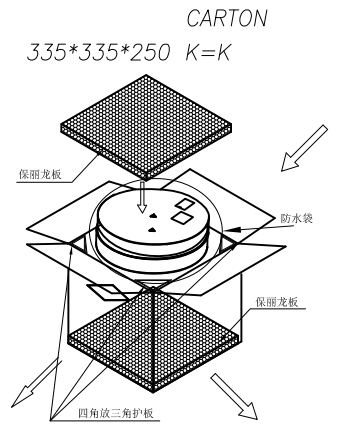
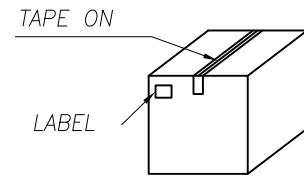
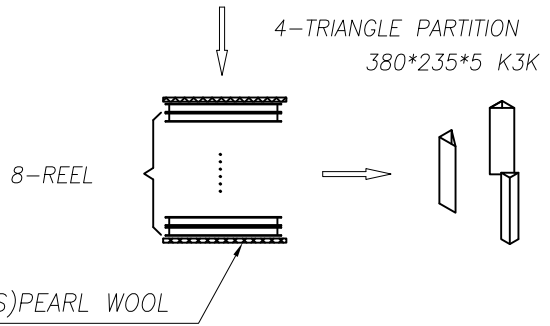
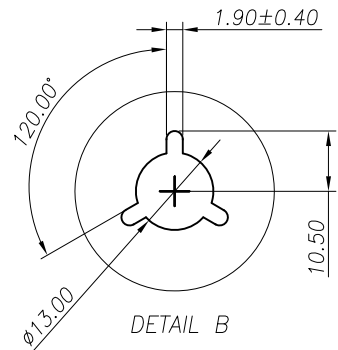
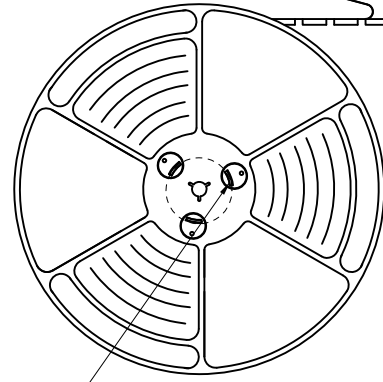
COVER TAPE PEELING ANGLE: 165°~180°
PEELING FORCE: 20~130g

CARRIER TAPE

User Direction of Unreeling



DETAIL B



UNLESS OTHERWISE SPECIFIED TOLERANCES		深圳市顺宏康科技有限公司			
DECIMALS:	ANGLES:	TITLE	8Pin 1.5H HINGE Micro SIM CARD CONN. 包装规范		
X :±0.5	X :±2°	DWN	ALLEN	PART NO. SOHG-150008-08G	
X.X :±0.20	X.X :±1°	CHKD	KEVIN	SCALE: 1:1	UNIT: mm
X.XX :±0.10		APVD	ERIC.W	SIZE: A3	SHEET: 10F 1
		REV: A1			
CUSTOMER COPY					